



Inside this issue:

News	1
MSW News	2
BSW News	3
Events & Opportunities	4 & 5
Scholarships/Funding	6

REMINDERS...

* **New Elective:** Prof. Christina Erickson will be teaching a new elective course in the Day Program, **SWK 210: Environmental Justice and Social Change**

*The **Women's Resource Center** is a quiet, private place for students to breastfeed or pump. Our drop-in hours are Monday 9am - 9pm, Tuesday 9am - 10:30pm, Wednesday and Friday 9am - 7pm, Thursday 9am - 6pm, and WEC Saturdays 11am - 2pm. The WRC is located in 207 Sverdrup. Call Jessica Nathanson at x1528 for more info.

***World Social Work Day** is April 15th, 2008. The Social Work Department will be hosting an information table and a guest speaker from 11-2 in Christensen Center in honor of WSWD 2008. Stay tuned for more details!

* **March is National Professional Social Work Month**
<http://www.socialworkers.org/pressroom/swMonth/2008/default.asp>

* **14th Annual Dining Out For Life: Thursday, April 24, 2008**
For more information visit:
<http://www.aliveness.org/dol.shtml>

* **Paper Pick-up Policy:** If a professor arranges for a student to pick up a paper from the bookshelf in the SWK office, it will be kept on the bookshelf up to 2 weeks into the next term. Any assignments not picked up before 2 weeks into the next term will be shredded. If you are unable to pick-up any assignments before that deadline, please make other arrangements with your professor.

MSW STUDENTS: Please remember to complete your online course evaluations for winter trimester!

Winter Trimester Ends: **Saturday, March 29th**
Spring Trimester begins: **Friday, April 11th**

Social Work Students: Mark Your Calendars...

You're Invited to the Field Appreciation Luncheon!

The end of the academic year is quickly approaching. As is our tradition, we will celebrate the hard work of Augsburg's Field Instructors and their interns at the Field Instructor's Appreciation Luncheon on:

Wednesday, April 30th, 2008
11:30-1:00pm
East Commons, Christensen Center
Augsburg College

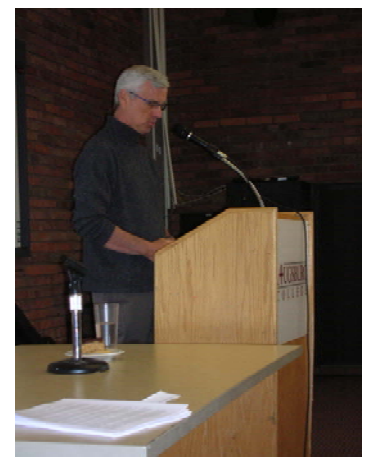
Please join your field instructor for lunch and conversation. To plan accordingly for food, please RSVP to Stacy Myhre at 612-330-1483 or by emailing myhre@augsborg.edu by Wednesday, April 23rd, 2008. Please alert Stacy to any vegetarian or other dietary requests.

To ensure our appreciation is shown, please check with our field instructor(s) to be sure they received an invitation. If they have not, please let Stacy know.

Omicron Delta Honor Society hosted Pastor Don Portwood from Lyndale United Church of Christ (UCC) at Augsburg College on Tuesday, March 25th from 12:00-1:00pm.

Pastor Portwood spoke on the separation of Church and State. He also addressed Lyndale UCC's stance on not performing the legal aspect of marriage in the church. He still performs unions for both GLBT and heterosexual couples.

This event was co-sponsored by QSU, The Social Justice Committee of Omicron Delta and Omicron Delta Social Work Honor Society



2008 MSSA Scholarships

*MSSA is sponsoring the following **scholarships** for the 2008-2009 school year:*

- Two **Education** scholarships (undergraduate)
- **Diversity** scholarship (diverse background)
- **Marjorie J. Carpenter** scholarship (graduate)

The deadline is June 1, 2008. See Emily in the SWK Office (Mem. 12) or visit www.mnsocialserviceassoc.org for more info and an application.



Hartford Partnership Program for Aging Education Scholars
\$3500 stipend for 2008-2009 concentration field placement - please apply!!

The Augsburg College Department of Social Work, in consortium with the University of Minnesota School of Social Work, is a recipient of the **Hartford Partnership Program for Aging Education (HPPAE)**. The HPPAE is a national, competitive grant aimed at building a skilled MSW work force for the nation's growing older adult population.

The Hartford Partnership Program for Aging Education's innovation is in building partnerships between universities and community agencies that offer students varied experience providing highly skilled social work care for older adults across a range of settings. Chosen field sites include:

- Amherst H. Wilder Foundation**
- DARTS Serving Seniors, Families, and Community ElderCare Rights Alliance**
- Fairview Home Care and Hospice**
- Pillsbury United Communities**
- St. Croix County (WI) - Department on Aging**
- Alzheimer's Association of MN and North Dakota**
- FamilyMeans**
- Hennepin County Human Social Services - West Broadway Village**
- Little Brothers - Friends of the Elderly**
- Lyngbolmsten Care Center**
- VA Medical Center - Minneapolis**

The award provides funding for concentration year student scholarships for three years. Current first year (full-time) and third year (part-time) students are eligible to apply; both Family Practice and PDPA. Funding provides a \$3500 stipend to complete a field rotation consisting of at least 2 sites serving older adults. The number of total concentration field placement hours will remain at 500. Students are also required to take an elective course on aging in their second year, participate in national evaluation strategies, and disseminate knowledge gained to the social work community. Applications are competitive and are not based on financial need. See the application for complete details. Please visit <http://web.augsburg.edu/socialwork/msw/field.html> to download an application.

Spring Registration

Online registration CLOSES on Friday, April 4.

Free coffee and muffins in the Oren Gateway Center on class weekend Saturdays (morning).

Weekend Chapel on Saturday @ 7:40am. Ray McKeever and worship assistant will lead the service.

Holley will be out of the office April 1 – April 8 and will not be checking email or voicemail. If you have an urgent matter, you may contact Lois Bosch at bosch@augsborg.edu or 612-330-1633.

Field: 2008-2009 academic year

Field updates and documents can be found at: <http://web.augsburg.edu/socialwork/msw/field.html>

Field Orientation

Saturday, March 29th, 2008

12:00-1:00pm

East Commons, Christensen Center

The social work department will provide lunch at this event. All MSW students completing a field placement next year (2008-2009), either foundation or concentration year, MUST attend. There will be NO make-up sessions. If this applies to you, please plan on attending. Questions? Contact Laura Boisen at 612-330-1439 or boisen@augsborg.edu or Holley at locherh@augsborg.edu.

Field Fair

Tuesday, April 8, 2008

3:00-5:00pm

University of Minnesota (St. Paul Campus)

Visit

<http://web.augsburg.edu/socialwork/msw/field.html>

for a flyer and map.

SWK Day at the Capitol

Monday, April 7

For more information or to register, visit

<http://www.naswmn.org/displaycommon.cfm?an=17>

Social Work Day at the Capitol is an opportunity for professional social workers, social work students, and social work educators to learn, march and rally together, and - most importantly - lobby our state lawmakers about matters of social policy that affect our clients, our profession, and the citizens of Minnesota. Because we are social workers, our voices must be heard!

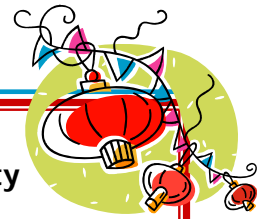
June 2008 Commencement Ceremony

The Augsburg Commencement website is up and running. Please visit the site for details on the ceremony and to reserve your tickets (limit 5). If you find yourself in need of additional tickets, please let Holley know. She will check to see if additional tickets will be made available this year.

<http://www.augsburg.edu/commencement/>

If you will be graduating this June, please remember to submit your Graduation Clearance form to Holley in Memorial 12B by FRIDAY, APRIL 25, 2008.

BSW News



Candidacy

The deadline to get your completed candidacy application in to Doran Edwards, the BSW Program Assistant Director is next Tuesday, April 15 - if you were at the March 12 orientation. If you applied later it would be the date stated on your Candidacy Timeline sheet.

Welcome New Majors!

The BSW Program welcomes new majors, Laura Holen and Matt Bowman.

Laura Holen will be a sophomore next fall and comes to us from the Music Therapy major.

Matt Bowman will also be a sophomore next fall and dabbled in business and economics before settling on social work. We are glad they chose social work!

Fall 2008 Registration

Anyone who has a particular question about transfer courses for the social work program can contact Doran Edwards at edwardsd@augsborg.edu for options and equivalency questions.

Graduation Application for Fall 2008 Seniors

It has been confirmed that GRADUATION APPLICATIONS should be turned in by the end of spring term for those graduating NEXT spring.

Steen Torstenson Award for 2008

Nominations are being counted. The faculty will be weighing in. And the award winners will be revealed at the Senior Party at Dr. Lehmann's home.

Senior Party

When. Sunday, April 27th, 2007 at 4 pm

Where. The Home of Professor Barbara Lehmann
1223 W. Minnehaha Avenue, Saint Paul

What. Pot luck dinner

Seniors need bring nothing but themselves!

New Elective!

SWK 210: Environmental Justice and Social Change

Professor Christina Erickson will be teaching a new elective course in the Day Program, SWK 210: Environmental Justice and Social Change.

This course will examines environmental justice issues, the relationship between environmental damage and damage to human populations, the differential effect of environmental damage on specific populations, and the ways social change agents can mobilize action to correct these injustices. **The class meets TTh 9:40 to 11:10.** The only prerequisite is an understanding we have only one planet.



Visit the Semester in Mexico Blog!

The CGE Program Semester in Mexico has established a blog where you can check in on the experience of classmates (Walter, Tiffany and Julie) or other students from the 9 Mexico Consortium schools in Minnesota. The students file weekly entries. Please visit the site and leave a comment.

The blog is at:

<http://www.swkmexico08.blogspot.com/>

Interested in participating in the Mexico semester in Spring 2009?



Info Session:
MONDAY, April 1st
4:30pm – 5:30pm
Memorial 23

Upcoming Events & Opportunities

NON-PROFIT

Career Fair

11am to 4pm U of M
Coffman Memorial Union
Monday, March 31st, 2008
www.idealist.org

Lutheran Social Service has multiple job openings:

- Mental Health Practitioner (St. Cloud)
- Mental Health Practitioner: In-Home Family Based Counselor (Alexandria)
- Mental Health Professional (Alexandria)
- Mental Health Technician (Alexandria)

For more info or to apply, visit www.lssmn.org/employe.htm



Shakopee Mdewakanton
Sioux Community

Shakopee Mdewakanton Sioux Community is seeking:

- Family Advocate
- Child Welfare Officer

For more info, check out www.ccsmdc.org. Interested individuals shall submit resumes to: SMSC, Attn: Janice Bad Moccasin, 2330 Sioux Trail NW, Prior Lake, MN 55372.

Mental Health Resources, Inc. has multiple job openings. For listings, visit www.mhresources.org.

The Human Development Center has multiple job openings. For listings visit: <http://www.hdchrc.org/employment.html>

OPEN DOOR INTERNATIONAL, INC. located in Reading, PA is seeking bi-lingual (English/Spanish) case counselors. For more info, visit <http://pa.opendoorcys.com/en/employment/>.

Counseling & Health Promotion is in the process of exploring interest in an on-campus, **weekly sexual assault support group** for the month of April, facilitated by the Director of the Aurora Center from the University of Minnesota (the U's sexual assault and advocacy center). If you are a female student at Augsburg, who has experienced sexual assault and would like support from other students in the context of a professionally-facilitated group, please contact **Beth Carlson of CCHP by email (carlson2@augsborg.edu) or phone (x1136)** to let her know of your interest and the times in your schedule you would be available. One possible time is late afternoon on Tuesdays, but another time may be selected depending on the schedules of the facilitator and interested students.

Other community sexual assault support groups that are available to students include the group at the Aurora Center on the U campus at Boynton Health Services (contact Jamie Tiedemann at the Aurora Center if interested at 612-626-9988); or the Women's Rape Support Group at the Rape and Sexual Abuse Center, Wednesdays from 5:30 to 7:00 pm (2431 Hennepin Avenue; call 612-374-9077 for phone intake).

The **Minnesota Indian Women's Resource Center** is seeking a **Life Skills Parenting Mentor** to provide direct mentoring services and facilitate a parent group for clients involved with the Family Stabilization Program. To apply, send resume, cover letter, and complete Employment Application to the MIWRC, 2300 15th Ave S, Minneapolis, MN 55404. For more info, call 612-728-2000, or visit www.miwrc.org to learn more about MIWRC.

Lifetrack Resources in St. Paul, a non-profit social services organization that focuses on the job search for persons who are receiving some type of assistance from the government, is looking for some on-call **Job Coaches** that would have day, evening or night availability. The pay is \$16 per hour. For more info, contact Meghan Booker at 651-265-2359.

HCMC is seeking casual (intermittent) social workers to fill in for social workers when they are out (similar to a substitute teacher). If you're interested, check out the job posting on HCMC's web site: www.hcmc.org, or contact Kristen at 612-873-2251. It is preferred if you have had past medical/hospital experience and have your MSW degree.

The U of M Medical Center, Fairview, Transitions and Life Choices (Palliative Care) Program announced a nine month, full time **fellowship in Clinical Social Work in Palliative Care**, to begin on September 1, 2008. For a program description and application, visit www.fairview.org/tlc or contact Dot Landis at 612-273-5893 or dlandis1@fairview.org. The deadline for applications is May 1, 2008.

The **Community Services Coordinator of the Rape and Sexual Abuse Center** of the Neighborhood Involvement Center will soon be starting their April training for on-call volunteers and undergraduate interns. The Center provides 40 hours of training and opportunities for growth with supervision. For more info, a detailed description of our program and an application, check out: http://www.neighborhoodinvolve.org/index.asp?Type=B_BASIC&SEC={988071AE-424C-486E-9F26-033A9B7CA0AA}

Muscular Dystrophy Association Summer Camp Volunteer Opportunity
Volunteers are committing to serve for one week in June as a one-to-one counselor to a child with Muscular Dystrophy. You will arrive to camp **Saturday, May 31st**, and depart camp on **Friday, June 6th**. For more info, and to request an application, please call Jodi @ 952-697-3251 or e-mail jcastillo@mdausa.org.

For more info on any of these opportunities, please check the Social Work Opportunities Board, outside the Social Work Office (MEM 12).

The primary mission of the social work profession is to enhance human well-being and help meet the basic human needs of all people, with particular attention to the needs and empowerment of people who are vulnerable, oppressed, and living in poverty. A historic and defining feature of social work is the profession's focus on individual well-being in a social context and the well-being of society. --- NASW

**American Indian Speaking Engagement
April 1st, 2008, from 9:40 to 11:10 am.
Century Room, Christensen Center**

Speakers:

- Noya Woodrich, Executive Director, Division of Indian Work
- Georgette Christensen, Little Earth
- Matt Thornhill, Hennepin County CPS
- Jennifer Simon, Director, AISSP

Student Volunteer Opportunity

A time commitment of only a **weekend** to complete. Stipend of **\$100** is available. Please contact EdD doctoral candidate at the University of Minnesota in family education, Eric Hansen at: eric.hansen@mpls.k12.mn.us or 612-692-1318/612-668-4980 if interested.

What you need to do:

Initially review 5 transcripts and identify social worker behaviors, then confer about findings. Later review all 18 interviews reviewing the behavior codes and themes that have been coded and developed, making a judgment about whether or not the incidents really fit the code/theme.



The Undefended Childhood Conference

April 3 to 4, 2008

Kellogg Hotel/Conference Center
East Lansing, Michigan

Keynote Speaker: The Honorable **Dr. Judith**

Mbula Bahemuka, High Commissioner of Kenya to Canada

An international conference on the Undefended Childhood will focus on the various issues of vulnerable children around the world. CEUs are available. Check out <http://undefendedchild.msu.edu> for more info. Registrations may be submitted electronically to Linda Hancock at hancoc31@msu.edu.

You are invited...

For **dessert and discussion** following the Saturday, April 19th, 7 pm performance of "Top Girls".

"Top Girls" takes the audience to a dinner party where women of history discuss political and personal sacrifices women have made throughout history. Focusing on whether women should enter the workforce or stay in a mother's traditional role, playwright Caryl Churchill paints a complicated journey that takes an audience through time, continuously commenting on women historically and in our modern culture.

Tickets are \$2 for Augsburg students. Ticket reservations can be made beginning 2 weeks prior to opening night. For reservations or other info, call x1257. All events take place in the Tjornhom-Nelson Theater in Foss Center.

Youth For Justice Intern

Paid internship, 40 hrs/week: 6/2 – 8/22

Youth for Justice (YFJ) is a youth-driven service learning program designed to keep youth involved with The Link and their communities. YFJ will focus on helping youth feel connected to their community, providing meaningful summer activities and developing self esteem and independence. **Deadline is April 7th**. For more info about The Link, check out www.thelinkmn.org. For a complete position description, visit:

<http://www.thelinkmn.org/Internships.html>

Close the Gap – End Disparities in the American Indian Community

Thursday, April 3rd, 2008

Minneapolis American Indian Center
1530 East Franklin Avenue
Minneapolis, MN 55404

Program begins at 6:00 pm. Social Hour with food and beverages and tabling event begins at 5:15 pm.

Preview a segment of the upcoming TPT documentary "Close the Gap" with discussion of the question: How can we change the next generation?

**Volunteer Opportunity at Arc Greater Twin Cities!
Sibling Support Group Assistant – Burnsville**

Assist the facilitator of a monthly support group of siblings ages 6-12 in Burnsville who have a brother or sister with a disability. Play games, have fun, and make the life of a child better. Group meets just once a month on the *1st Saturday* from 9:00 to 11:00am. For more info, contact Michelle at 952-915-3670 or michelletheisen@arcgreatertwincities.org



Hamm Clinic 2008 Conference

Friday, April 11th, 2008, 8:00am to 4:00pm

St. Paul College Auditorium

Mark Epstein, M.D., A Buddhist Perspective on Psychotherapy. \$80 for Augsburg faculty. \$30 for Augsburg MSW students. For more info or to register, check out

www.hammclinic.org/page/2008Conference.jsp or call 651-224-0614.

Interact Center presents...

BROKEN BRAIN SUMMIT

April 3rd - 26th

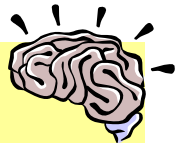
Tickets \$8 to \$16

Reservations: 651-334-3888

To purchase online, go to www.ticketturtle.com
Heads will roll (and sing) when renegade researcher Dr. Dendrite gathers a motley crew of brain experts for a midnight meeting...

Performances at Old Arizona Theatre, 2821 Nicollet Ave S, Minneapolis. For more info, check out

www.interactcenter.com.



Scholarships and Funding

New Web Site to Assist Borrowers with Student Loan Debt

<http://capwiz.com/socialworkers/utr/1/CYCOIBIRIL/EZ/ZWIBISFG/1718685171>

The burden of student loan debt has been growing more unmanageable for social workers and students over the last several years. The National Consumer Law Center and the Project on Student Debt have developed the **Student Loan Borrower Assistance Project** that can help loan saddled social workers and other borrowers to find out more information about the recently passed College Cost Reduction and Access Act, among other student loan related issues. Check it out!

The **Social Welfare History Group (SWHG)** is happy to announce its first history essay student scholarship award. To learn about the Social Welfare History Group, visit: <http://depts.washington.edu/sswweb/swhg/index.html> We encourage authors to submit their papers via email by Friday May 2, 2008. The papers should be emailed to ibc9717@email.unc.edu. For more info, contact: Iris Carlton-LaNey, Ph.D., President, Social Welfare History Group, University of NC at Chapel Hill, School of Social Work. For full description please see previous issues of News Notes or contact Emily @ 612-330-1189 or cronk@augsborg.edu

Minnesota Social Service Association (MSSA) has three scholarships available: MSSA Education Scholarship, a Marjorie J. Carpenter Scholarship and an MSSA Diversity Scholarship. For scholarship requirements and applications, visit www.mnsocialserviceassoc.org/index_files/Page531.htm.



American Association of University Women (AAUW) has many fellowships and grants available. For a complete list and to apply, check out www.aauw.org/education/fga/fellowships_grants/index.cfm.

The Women's Studies Program has money available for students who are interested in attending Women's/Gender Studies and feminist conferences. We also have three free memberships for the National Association of Women's Studies (www.nwsa.org), which has its conference in June of this year. If you are interested in funding to attend a conference, or a free NWSA membership, or both, please contact Jessica Nathanson at nathanso@augsborg.edu

John Gyles Education Awards are available - Full Canadian or American citizenship is a requirement. Awards are available to both male and female students with at least a 2.7 GPA. Selected students will receive up to \$3,000. The application deadline is June 1, 2008. For more info, visit www.johngyleseducationcenter.com

CSWE-Carl A. Scott Memorial Scholarships

The awards will be made to students from ethnic groups of color who are in their last year of study for a social work degree in a baccalaureate or master's degree program accredited by CSWE. Applications due May 5, 2008. For more info, visit www.cswe.org/CSWE/scholarships/The+Carl+A+Scott+Memorial+Fund/.

The **Karen Neitge Scholarship**, in the amount of \$283, is awarded annually to a student of any undergraduate class or major, is based upon academic achievement and financial need, and also will be given to a student who volunteers in the community as well as illustrates Augsburg's commitment to nondiscrimination, specifically in the areas of sexual orientation and gender identity/expression.

The application for this award can be found here: http://web.augsburg.edu/~oberry/Karen_Neitge_Scholarship_Application_Spring_2008.pdf

Applications for this award are due no later than 5 pm on Wednesday, April 9th, to the LGBTQIA Support Services office (Christensen Center 1D) or to Campus Box 75.

Applications may also be picked up at the Christensen Center Welcome Desk or in the Auggie's Nest.

Please nominate a graduating senior for the Marina Christensen Justice Award.

This award goes to one student at commencement each year who represents to a high degree Augsburg's motto, "Education for Service". The student must have demonstrated a dedication to the kind of community involvement characterized by the personal and professional life of Marina Christensen Justice, who courageously and effectively reached out to disadvantaged people and communities.

Who would you like to nominate for this award? Please submit the name of the student, your name, and why you are nominating the student (Include all off-campus community service and service-learning work, internships, field placements and volunteer activities) to Mary Laurel True until **Thursday, April 10th**, at truem@augsborg.edu or Campus Box#108.