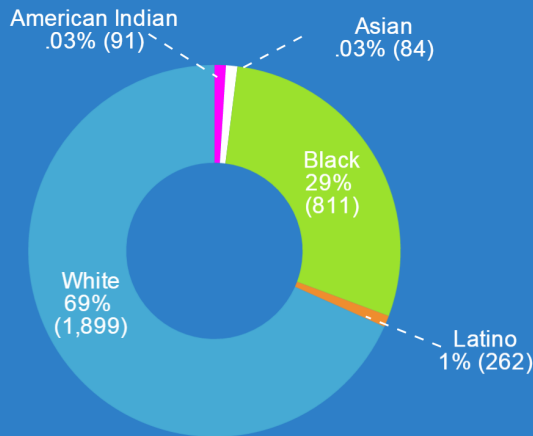


## Intermediate District 287

### Students: 2,734



#### Free/Reduced Meals



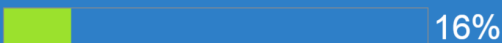
#### Home language not English



#### Students of Color



#### Multi-Ethnic Students



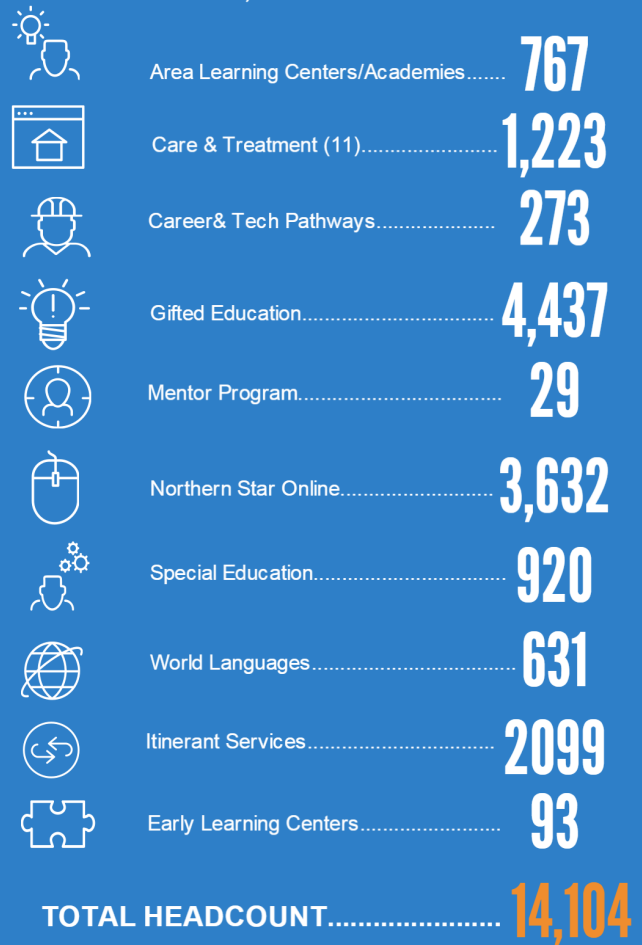
#### Homeless/Highly Mobile



Based on 14-15; Some students are in multiple categories

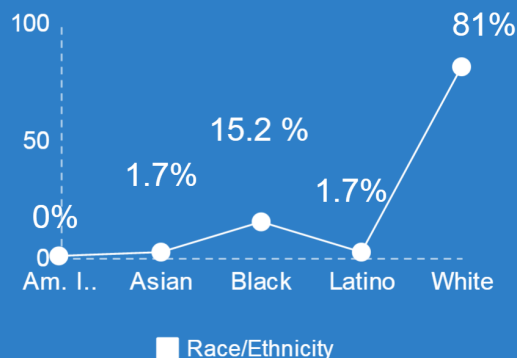
### Programs

120 programs and services at 19 sites touch over 14,000 students.



Based on 14-15; Some students participate in more than one program

### Staff: 891



### Highly Specialized Staff

Our critical mass of specialized staff allows us to make timely and cost-effective staffing adjustments as needed to meet students' needs. These staff can be difficult for districts to recruit and retain.

- 71%** Licensed Staff with a Master's Degree or above (261)
- 19%** Staff of color (169)
- 7%** Licensed staff of color (22)

# INSIDE287

## #4 Facts

Working together, member districts have created a variety of programs to serve the unique learning needs of their students.

### Special education programs, including:



Autism Spectrum Disorder  
Emotional Behavior Disorder  
Mental health needs  
Fetal Alcohol Spectrum Disorder  
Developmental Cognitive Disorder  
Sensory and other health impairments  
Neurobiological disorders

### Other Programs:

- Alternative Learning Centers (Academies) 
- Dropout recovery and prevention
- Gifted & Talented and World Language Educational Programs
- Programs for pregnant and parenting teens
- Early Learning Centers with national accreditation 
- Northern Star Online
- Vocational, technical and career-focused programs 
- Independent study programs 
- English Language Learner programs
- Itinerant Services that offer a full continuum of low incidence special education instruction services
- Transition programs focusing on life skills, job training, and post secondary and independent living 
- Residential treatment and chemical dependency

- 1 Over 45 years ago, several forward-thinking school districts united to serve students with unique needs. Today, 287 continues to be an extension of its 12 member districts. The intermediate builds programs and services based on school district and student requests and needs. 287 as an entity IS its member districts.
- 2 On November 20, 2014, upon fulfillment of the 2009-2013 strategic plan, 100% of member districts declared that Intermediate District 287 was vital to their mission
- 3 Member districts say 287's best aspects include special education programs and broad program offerings
- 4 The Minnesota Partnership for Collaborative Curriculum received a 2015 Local Government Innovation Award. The Partnership originated through the member district Teaching and Learning Advisory.

## 287 Facilities



Sites Owned or Leased: 8

Sites hosted by member districts/Hennepin County/other: 11

## 12 Member Districts & Board Members

Brooklyn Center	Jeffery Palm
Eden Prairie	Carol Bomben, Board Vice Chair
Edina	Regina Neville
Hopkins	Laura Ronbeck
Mnettonka	Karen Filla
Orono	Michele Kunz, Board Treasurer
Osseo	Dean Henke
Richfield	Nancy Rowley, Board Clerk
Robbinsdale	Sherry Tyrrell
St. Louis Park	Nancy Gores
Wayzata	Andrea Cuene
Westonka	Ann Bremer, Board Chair

## 287 Leadership

### Sandy Lewandowski, Superintendent

Anne Becker, General Counsel  
Mae Hawkins, Executive Director of Business Services  
Elisabeth Lodge Rogers, Executive Director of Student Services & Educational Programs  
Chad Maxa, Executive Director of Innovation and Technology

## OUR MISSION

The mission of Intermediate District 287 is to be the premier provider of innovative specialized services to ensure that each member district can meet the unique learning needs of its students.