

AUGSBURG COLLEGE

summer
session '03



affordable tuition • free parking • central location • convenient class times

Non-Profit Org.
U.S. Postage
PAID
Minneapolis, MN
Permit No. 2031

AUGSBURG
COLLEGE
2211 Riverside Avenue
Minneapolis, MN 55454



to register

All students may begin to register for Summer Session courses on **April 7**. **Web registration will remain open until May 2 (Session I) and June 13 (Session II)**. Web registration hours will be 9 a.m. to 10 p.m. daily. Augsburg students are encouraged to use Web registration. Non-Augsburg students must register in person at the Enrollment Center between 8:30 a.m.-4:30 p.m. M-F (extended hours to 6 p.m. on the first and second day of classes for each session; open Thursdays 12-4 p.m.). The Enrollment Center is located in Sverdrup Hall. We recommend that you schedule your courses as early as possible.

If a discrepancy is found between this catalog and course information found through AugNet, AugNet should be considered the most current, and thus, correct.

Students registering for Summer Session I must complete their registration by May 27.

Students registering for Summer Session II must complete their registration by July 7.

Augsburg students will be billed through Student Accounts. Non-Augsburg students must pay 50 percent of tuition at the time of registration. All students must be paid in full by May 9 for Summer Session I and June 20 for Summer Session II. **Tuition must be paid in full (see calendar), or you will be dropped from your course(s).** Augsburg students who have unpaid balances from previous terms must pay these balances before they may register for Summer Session.

Change in Registration: Many courses fill early and courses with low enrollments will be canceled one week before the first day of the session. Students who cancel their registration prior to the first day of the session must complete a drop/add form at the Enrollment Center (this must be done in person). There is a charge of \$100.

For refund information please see **schedule of refunds** on next page.

A late fee of \$75 will be assessed for students who register after the first day of the term. No Session I registrations will be accepted after May 30. No Session II registrations will be accepted after July 10.

calendar

summer 2003

session I session II

Registration begins	April 7	April 7
Web registration closes	May 2	June 13
Balance of tuition due	May 9	June 20
Classes begin	May 27	July 7
Last day to:		
• Register (without late fee)	May 27	July 7
• Register (added late fee of \$75)	May 30	July 10
<i>(no registrations will be accepted after this date)</i>		
• Drop class without notation	May 30	July 10
• Change grading option	June 13	July 25
• Withdraw from class	June 13	July 25
Classes end	June 27	August 7
Grades due in Registrar's Office	July 7	August 15

schedule of refunds

100% of the refundable portion of tuition (less \$100 administrative fee):

- If cancellation at the Enrollment Center is no later than May 30 (Session I) and July 10 (Session II)

75% of the refundable portion of tuition:

- If cancellation at the Enrollment Center is no later than June 3 (Session I) and July 15 (Session II)

50% of the refundable portion of tuition:

- If cancellation at the Enrollment Center is no later than June 6 (Session I) and July 18 (Session II)



costs

The tuition charge for 2003 Summer Session courses is:

- \$1320 for full-credit courses
- \$660 for half-credit courses

Audits are charged at the tuition rates listed above.

financial aid

Eligibility for Summer Session attendees

Students who maintain half-time status (as defined by the program in which they are enrolled) are eligible to apply for financial aid.

Day program

Students enrolled in either Session I or II, or both sessions combined may be eligible to apply for financial aid if their course load is at least 1.5 credits over the two sessions.

Augsburg College, as affirmed in its mission, does not discriminate on the basis of race, color, creed, religion, national or ethnic origin, age, gender, sexual orientation, marital status, status with regard to public assistance, or disability in its education policies, admissions policies, scholarship and loan programs, athletic and/or school administered programs, except in those instances where religion is a bona fide occupational qualification. Augsburg College is committed to providing reasonable accommodations to its employees and its students.

Any questions concerning Augsburg's compliance with federal or state regulations implementing equal access and opportunity can be directed to Betty Wade, affirmative action coordinator, Office of Human Resources, CB 79, Augsburg College, 2211 Riverside Ave., Minneapolis, MN 55454. She can be reached by telephone, 612-330-1023; or by e-mail, <wadeb@augsborg.edu>.

WEC program

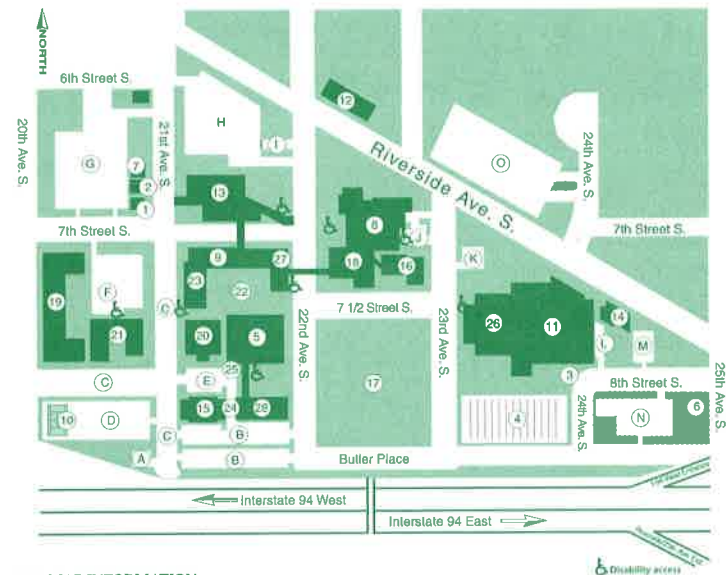
No aid is given for Summer Session I as it runs concurrently with the WEC spring trimester.

WEC students enrolled in Summer Session II may be eligible for financial aid if their course load is at least 1.0 credit.

To apply

The only forms of financial aid available for Summer Session attendees are the Federal Pell Grant (for students who meet eligibility requirements) and student loans. The financial aid priority deadline for Summer Session is April 15, 2003. Visit the Enrollment Center Web site to download an application form at <www.augsburg.edu/enroll>.

map of augsburg



COLLEGE MAP INFORMATION

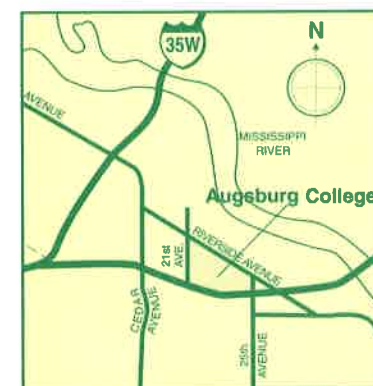
1. Admissions Weekday Program
2. Admissions Annex and Weekend Admissions
3. Air Structure Entrance (November through March)
4. Edor-Nelson Athletic Field and Seasonal Air Structure
5. Christensen Center
6. East Hall
7. Faculty Guest House
8. Foss, Lobeck, Miles, Center for Worship, Drama & Communication
9. Sverdrup Hall
10. Husby-Strommen Tennis Courts
11. Ice Arena
12. Development, PR/Communications, and Alumni/Parent Relations

13. Lindell Library
14. Maintenance and Grounds Shop
15. Mortensen Hall
16. Murphy Place
17. Murphy Park
18. Music Hall
19. New Residence Hall
20. Old Main
21. Anderson Hall
22. Quad
23. Science Hall
24. Security Dispatch Center
25. Shipping and Receiving
26. Melby Hall
27. Sverdrup-Oftedal Memorial Hall
28. Umess Hall

PARKING INFORMATION

- A. Visitor Parking
- B. Resident Parking
- C. Commuter Parking
- D. Faculty/Staff/Commuter/Resident Parking
- E. Resident Parking
- F. Resident Parking
- G. Admissions/Faculty/Staff Parking
- H. Faculty/Staff Parking
- I. Visitor Parking
- J. Faculty/Staff Parking
- K. Faculty/Staff Parking
- L. Visitor Parking
- M. Faculty/Staff/Commuter Parking
- N. Faculty/Staff/Commuter Parking
- O. Fairview-University Parking Ramp

campus location



35W from the North—

Take Washington Avenue exit and turn left on Washington (turns right onto Cedar Avenue), turn left at Riverside Avenue, right at 21st Avenue South.

I-94 East from Minneapolis—

Take 25th Avenue exit, turn left at 25th Avenue, turn left at Riverside Avenue, turn left at 21st Avenue South.

I-94 West from St. Paul—

Take Riverside exit, turn right at Riverside Avenue, turn left at 21st Avenue South.

35W from the South—

Follow the I-94 St. Paul signs (move to right lane after each of two mergers). Take 25th Avenue exit and turn left at Riverside Avenue, turn left at 21st Avenue South.

session I may 27 to june 27

Please refer to <http://augnet.augsburg.edu> for the most current classroom information.

ART

ART 132-S
Photography Raschke
 The camera will be used as a tool for visual creativity and expression using black and white photographic processes. Students need access to a 35 mm, single-lens reflex camera. Estimated cost of film, etc.: \$200-225.
 Perspective/Skill: Aesthetics
 6-9:30 p.m. T, Th Old Main 4

ART 247-S
Life Drawing McCaffrey
 This course will introduce the student to the methods and techniques of drawing the human form through the use of live models. Emphasis will be placed on development of perceptual drawing skills to accurately render the human form in a spatial environment. Topics covered will include: gesture, proportion, foreshortening, skeletal and musculature anatomy, shading and rendering, and composition. NOTE: There will be a \$50 fee payable on the first day of class for the cost of the model.
 Perspective: Aesthetics
 6-9:30 p.m. M, W Old Main 17

BUSINESS ADMINISTRATION/MIS

ACC 221-S
Principles of Accounting I Kader
 Introduction to business activities, basic concepts and fundamentals of accounting, the accounting cycle, and preparation of financial statements.
 8:30 a.m.–noon M, W Old Main 29

BUS 242-S
Principles of Management Cerrito
 Development of the theory of management, organization, staffing, planning, and control. The nature of authority, accountability, responsibility, and analysis of the professional manager.
 6-9:30 p.m. T, Th Music 24

BUS 331-S
Financial Management Kapoor
 Topics related to theory acquisition, fund allocation and management, sources and uses of long- and short-term funds, capital costs/budgeting, leverage, and dividend policy.
 (Prereq.: ACC 221, ECO 112 or 113, and MPG 3)
 6-9:30 p.m. M, W, F Old Main 26

BUS 379-S
Quantitative Methods Isaacson
 An introduction to quantitative reasoning to assist students in reading and interpreting data. Topics include descriptive measures, probability, sampling distributions, estimation, and hypothesis testing with emphasis on applied problems in business and economics.
 (Prereq.: MIS 175, 360 or 370 and MPG 3)
 6-9:30 p.m. M, W Sverdrup 206

MKT 252-S
Principles of Marketing Meziuro
 Principles of basic policy and strategy issues in marketing. Legal, ethical, competitive, economic and technological factors as they affect product, price, promotion and distribution decisions.
 6-9:30 p.m. M, W Old Main 18

ECONOMICS

ECO 112-S
Principles of Macroeconomics Gilsdorf
 An introduction to macroeconomics: national income analysis, monetary and fiscal policy, international trade. Application of elementary economic theory to current economic problems. May be taken independently of ECO 113 or 110.
 ECO 112 and 113 may be taken in either order.
 (Prereq.: MPG 2)
 Perspective/Skill: Western Heritage
 1-4:30 p.m. M, W Sverdrup 202



ECO 113-S
Principles of Microeconomics Stein
 An introduction to microeconomics: the theory of the household, firm, market structures, and income distribution. Application of elementary economic theory to market policy. May be taken independently of ECO 110 or 112. ECO 112 and 113 may be taken in either order.
 (Prereq.: MPG2)
 Perspective/Skill: Social World 1, 2
 8:30 a.m.–noon T, Th Sverdrup 201

EDUCATION

EDC 220-S (.5 credit course)
Educational Technology Erickson
 You will be exposed to basic theories of communication, selection, evaluation, and research. Become skilled in some of the digital tools used in today's schools. Learn how to choose appropriate applications of theories and techniques for educational settings.
 8:30 a.m.–noon M, W Sverdrup 204

ENGLISH

ENG 225-S
Intermediate Expository Writing Swanson
 This course builds on the practices and methods of Effective Writing (ENG 111). Its workshop format stresses style and organization, the process of revision, self and peer evaluation, and the relationship between reading and writing.
 (Prereq.: ENG 111)
 Perspective/Skill: Writing
 4-7:30 p.m. T, Th Old Main 26

ENG 251-S
Readings in American Literature Clayton
 An introduction to selected texts of literary and historical importance that yield an understanding of our Western heritage and contemporary American worldviews. Themes could include the emergence of a national identity, the shaping of a collective American memory, and the contributions

to American thought by women and people of color.
 Perspective/Skill: Western Heritage
 6-9:30 p.m. T, Th Old Main 23

GENERAL STUDIES

GST 009-S
Cooperative Education Olson
 Cooperative Education is a work experience related to a student's major/minor or career interests, but not done for academic credit. The goal is for students to apply theory to practice in an approved work setting. Students set learning goals and evaluate their learning with the Director of the Center for Service, Work, and Learning. Satisfactory completion fulfills the Augsburg Experience (AE).

HISTORY

HIS 332-S
History of U.S. Foreign Relations Staff
 A survey of U.S. foreign relations from the American Revolution through the Cold War, emphasizing changing definitions of war and peace, tensions between internationalism and isolationism, the emergence of the U.S. as an economic and military power.
 6-9:30 p.m. M, W Old Main 13

INTERDISCIPLINARY STUDIES

INS 105-S
Introduction to American Indian Studies Weston
 This course is intended to introduce students to American Indian Studies. Concepts and topics to be covered include, among others, history, language, culture, literature, policy, images, contemporary issues, and the arts. Minnesota Indians will be emphasized where appropriate.
 Perspective/Skill: Intercultural Awareness 1
 6-9:30 p.m. M, W Old Main 23

session II July 7 to August 7

Please refer to <http://augnet.augsburg.edu> for the most current classroom information.

ART

ART 107-S
Drawing Bollman
 This is a first level drawing course. Students work with a variety of traditional and non-traditional drawing media and explore important concepts of drawing. Slide lectures, demonstrations, and critiques complete the learning experience.
 Perspective/Skill: Aesthetics
 6-9:30 p.m. M, W Old Main 17

ART 118-S
Painting Bollman
 In this first level painting course, students learn important concepts of painting. Most class time is spent painting. Slide lectures, demonstrations, and critiques complete the learning experience.
 Perspective/Skill: Aesthetics
 6-9:30 p.m. T, Th Old Main 17

ART 225-S
Graphic Design I Allen
 This course is an introduction to the principles and techniques of graphic design using page layout software. Emphasis will be placed on designing with text and image.
 Perspective/Skill: Aesthetics, Speaking
 6-9:30 p.m. M, W Foss 22B

ART 249/349-S (with HIS 249/349-S)
Designed Environment Anderson
 This course addresses the designed environment, the intentionally designed places in which we live. We will investigate architecture, landscape architecture, and urban design; class sessions consist almost exclusively of walking tours and site visits to prominent examples of design excellence. (Prereq.: for upper division—an art, history, or urban studies course, and ENG 111)
 Perspective/Skill: Aesthetics or City; Writing (upper division only)
 1-4:30 p.m. M, W Science 123

ART 330-S
Graphic Design II Allen
 This course is an advanced study of the graphic design of typography and visual imagery for print production using the computer. Studies include identification of design problems and presentation to client.
 (Prereq.: ART 225)
 6-9:30 p.m. M, W Foss 22B

BUSINESS ADMINISTRATION/MIS

ACC 222-S
Principles of Accounting II Kader
 A continuation of ACC 221. Introduction to cost accounting for manufacturing. Basic concepts and fundamentals of managerial accounting, planning and controlling processes, decision-making, and behavioral considerations.
 (Prereq.: ACC 221)
 8:30 a.m.–noon T, Th Old Main 29

BUS 240-S
Personal Finance Kapoor
 Introduction to personal financial planning and budgeting, credit management, income taxes, insurance, real estate, investments, retirement, and estate planning.
 6-9:30 p.m. M, W Old Main 26

BUS 340-S
Human Resource Management Cerrito
 Personnel function in business, acquisition, and utilization of human resources; desirable working relationships; effective integration of the worker with the goals of the firm and society.
 (Prereq.: BUS 242)
 6-9:30 p.m. M, W Music 24

BUS 440-S
Strategic Management Cerrito
 Concepts and principles related to the management of operating functions taught from a managerial viewpoint with examples from various industries and sectors.
 (Prereq.: BUS 242)
 6-9:30 p.m. T, Th Music 24

BUS 495/MAL 599-S
Topics: Leadership through Influence: Coaching and Consulting Lashbrook
 The purpose of this course is to explore how to lead through influence rather than authority. We will examine consulting and coaching models to determine appropriate processes and practices. You will have opportunities to apply these models through both consulting and coaching assignments. (Prereq.: senior or graduate student status)
 6-9:30 p.m. M, W Sverdrup 206

MIS 175-S
Principles of Computing for Business Isaacson
 An introductory course to develop understanding of basic computing concepts and specific skills in using microcomputer software (Windows, Word, Excel, Access, Power Point, e-mail and the Internet). Emphasis on solving business related problems using software.
 (Prereq.: MPG 3)
 6-9:30 p.m. T, Th Foss 22A

MKT 252-S
Principles of Marketing Meziou
 Principles of basic policy and strategy issues in marketing. Legal, ethical, competitive, economic, and technological factors as they affect product, price, promotion, and distribution decisions.
 6-9:30 p.m. T, Th Old Main 27

MKT 466-S
International Marketing Meziou
 This thought-provoking course examines those issues and activities unique to marketing in an international setting. Emphasis is placed on adaptation of a marketing mix according to the international marketing environment.
 (Prereq.: MKT 252)
 6-9:30 p.m. M, W Old Main 27

CHEMISTRY

CHM 100-S
Chemistry for Changing Times Gyberg
 This course introduces basic chemistry concepts in the context of numerous science-based issues in our everyday lives with the goal of students having a

basic understanding of the science behind issues present and in the future.
 (Prereq.: MPG 2)
 Perspective/Skill: Natural World 2
 8:30 a.m.–noon T, Th Science 315

EDUCATION

EDC 206/566-S
Diversity/Minnesota American Indians Gresczyk
 This course examines human diversity and human relations. It fulfills the Education Department requirements and is an option within the licensure program.
 6-9:30 p.m. M, W Sverdrup 1

EDC 480/580-S
School and Society Erickson
 Emphasis on points of view about the role of school in modern society, relationships with parents and community, collaborative models, leadership, and professional development. Serves as final theoretical preparation for student teaching. Fieldwork experience.
 (Prereq.: PPST and admission to department)
 Perspective/Skill: Social World 1 and 2, Writing
 8:30 a.m.–noon M, W Sverdrup 17

EED 200-S
Elementary Education Earth Science Stangl
 This course is designed for elementary education majors and includes earth science "hands-on" inquiry based activities that model the teaching and learning process of scientific inquiry. Meets basic earth science subject matter standards for initial licensure.
 5:30-9 p.m. M, W Old Main 4

ENGLISH

ENG 282/482-S
19th Century British Novel: Investigating the Victorian Thriller Liddle
 This course studies the novel of suspense, mystery and terror in 19th-century Britain, from Frankenstein early in the century to Dracula at its



session II July 7 to August 7

end. Often challenging and sometimes subversive, these novels drew intense public scrutiny by raising issues that politer domestic fiction hardly hinted at. We will read several of the best of these thrillers, investigate the culture that produced them, and work to determine why they have continued to appeal to successive generations of readers. (Prereq.: ENG 111)

Perspective/Skill: Western Heritage
1-4:30 p.m. T, Th Sverdrup 206

GENERAL STUDIES

GST 009-S
Cooperative Education Olson
Cooperative Education is a work experience related to a student's major/minor or career interests, but not done for academic credit. The goal is for students to apply theory to practice in an approved work setting. Students set learning goals and evaluate their learning with the Director of the Center for Service, Work, and Learning. Satisfactory completion fulfills the Augsburg Experience (AE).

HEALTH/PHYSICAL EDUCATION

HPE 115-S
Chemical Dependency (.5 credit) Broek
An analysis of chemical abuse and what can be done for the abuser. Includes information about school health education and services.
6-9:30 p.m. M only Music 22

HISTORY

HIS 222-S
20th Century United States Shariff
A survey focusing on the nation's adjustment to industrialization and urbanization, the emergence of the U.S. as a world power, the rise of a strong federal government, the implications of increasing racial and ethnic diversity, and the impact of affluence. Perspective/Skill: Western Heritage, Critical Thinking
6-9:30 p.m. T, Th Old Main 18

HIS 249/349-S (with ART 249/349-S)
Designed Environment Kimball
This course addresses the designed environment, the intentionally designed places in which we live. We will investigate architecture, landscape architecture, and urban design, both in class and in site visits to prominent examples of design excellence. (Prereq.: for upper division—an art, history, or urban studies course, and ENG 111)
Perspective/Skill: HIS 349—City or Aesthetics; Writing (Upper division only)
1-4:30 p.m. M, W Science 123

INTERDISCIPLINARY STUDIES

INS 199/399-S
Internship Olson
A work or service experience in which the student, faculty sponsor, and site supervisor design a learning agreement plan that links classroom theory, the liberal arts perspectives and graduation skills with the opportunities inherent in the internship. The student must complete a learning portfolio based on the internship. Student should consult with the faculty sponsor regarding requirements and get permission to register. P/N grading only.

INS 225-S
Introduction to Islam Kader
The course covers the ideological foundations of Islam, its basic concepts and tenets, Islamic law (Shariah), Islamic economic and political systems, and Islamic patterns of life. Perspective/Skill: Intercultural Awareness I
6-9:30 p.m. M, W Music 23

INS 255-S
Paideia Seminars Kaufman
Students will participate in a series of seminar discussions following the Paideia seminar format as developed by Mortimer Adler. Seminar topics emphasize selections that help students to think critically, understand timeless ideas, listen carefully, and question thoughtfully. Perspective/Skill: Critical Thinking
8:30 a.m.—4 p.m. July 21–25 Old Main 18



INS 260-S
Contemporary American Indians Weston
This course examines the situation of American Indians in the United States since the Indian Reorganization Act of 1934. Emphasis is on current issues such as tribal sovereignty, treaty rights, reservation economics and Indian education. Perspective/Skill: Intercultural Awareness I education.
6-9:30 p.m. M, W Old Main 13

MAL (MASTER OF ARTS IN LEADERSHIP)

MAL 599/BUS 495-S
Topics: Leadership through Influence: Coaching and Consulting Lashbrook
The purpose of this course is to explore how to lead through influence rather than authority. We will examine consulting and coaching models to determine appropriate processes and practices. You will have opportunities to apply these models through both consulting and coaching assignments. (Prereq.: senior or graduate student status)
6-9:30 p.m. M, W Sverdrup 206

MODERN LANGUAGES

ASL 102-S
Beginning Sign Language II Mikkelson
An introduction to deaf culture and the signs and syntax of ASL. Students observe the demonstration of signs, practice their own signing, and learn the facial expressions and body language needed to communicate clearly with deaf and hard-of-hearing people. Perspective/Skill: Intercultural Awareness
6-8:30 p.m. T, W, Th Old Main 29

SPA 112-S
Beginning Spanish II Kingsley
Aims to develop four basic skills: understanding, speaking, reading, and writing of elementary Spanish, Introduction to the culture of the Spanish-speaking world. Perspective/Skill: Intercultural Awareness
8:30–11:00 a.m. T, W, Th Old Main 26

POLITICAL SCIENCE

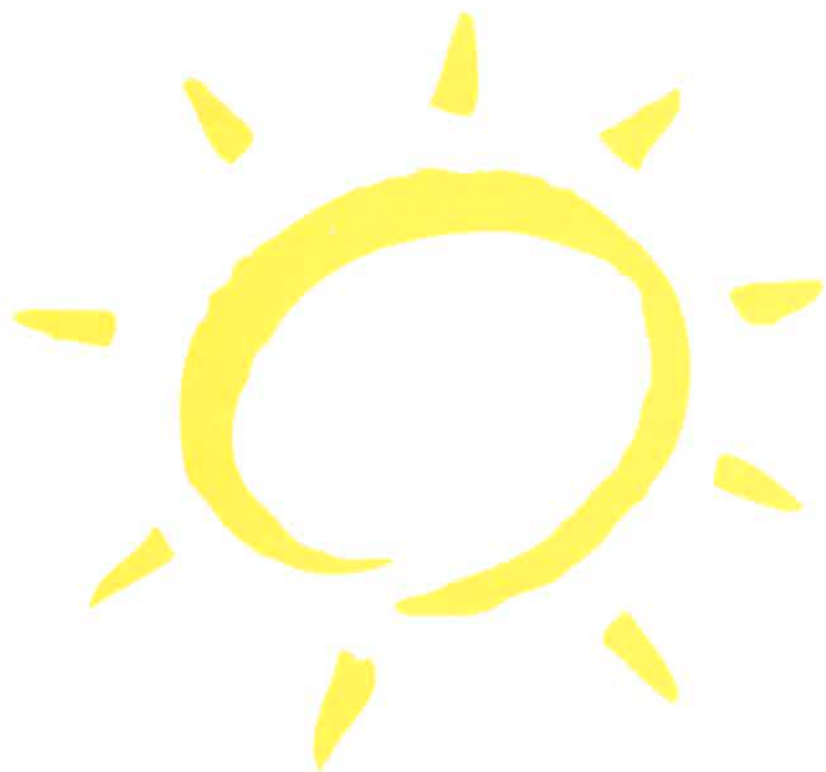
POL 170-S
Law in the United States Underhill-Cady
An introduction to the workings of the course system in the United States, focused on the concepts of power, justice, rights, and freedom. Topics include civil rights and civil liberties in the context of the war on terrorism, criminal and civil law, torts, racism and discrimination, and environmental law. Guest speakers will include local lawyers, judges, civil rights activists, and police. Perspective/Skill: Social World 2 or 3
6-9:30 p.m. T, Th Old Main 23

PSYCHOLOGY

PSY 295-S
Topics: Psychological Research on Religion and Spirituality Tix
This course surveys the most important psychological theory and research related to personal religiousness and spirituality. Topics include the relationship between science and religion; the nature and nurture of religiousness; the neuropsychology of religiousness and spirituality; religious development over the life course; conversion; religion and coping with stressful life events; religiousness, physical health, and well-being; religion as culture; religious motivations and attitudes; forgiveness; meaning-in-life; and gratitude. (Prereq.: PSY 102 or PSY 105)
1-4:30 p.m. T, Th Old Main 25

RELIGION

REL 111-S
Introduction to Theology Staff
An introduction to the academic discipline of theology and to the dialogue between the church and the world that concerns Christian doctrine. (Not accepted for credit for students who have taken REL 331). Perspective/Skill: Christian Faith 2 or 3
6-9:30 p.m. T, Th Old Main 10



summer session application form

Summer Session applications are available online at:
<www.augsburg.edu/enroll/registrar> then click on
“Download Registrar Forms.”

