

# AugNet 101

Introduction to AugNet  
MAL

# Activating Your Account

INSIDE  
AUGSBURG

AUGNET ACCOUNT ACTIVATION

**Locate your record (Step 1 of 5)**

Welcome to AugNet! Please enter the information requested below so that we can look up your account.

Last name:

8-digit Augsburg student ID number:

[Next](#)

NOTE: If your student ID number is only 7 digits long and begins with "72" or "73", please add a "3" before your ID number. For example, 7371234 would become 37371234. If you do not know your student ID number, please contact the Enrollment Center at 612-330-1046.

© 2007 Augsburg College Information Technology

- Go to [inside.augsburg.edu/techdesk](http://inside.augsburg.edu/techdesk)
- You need to know student ID
- You get to choose password
- Record your username and password

# AugNet Services – logged off

AUGSBURG  
COLLEGE

## INSIDE AUGSBURG



Search... Go

### NEWS AND EVENTS

[Inside Augsburg Home](#)

[News Resources](#) >>

### AUGNET SERVICES

Student, faculty, and staff  
login for secure services.

Username

Password

[forgot password?](#)

[login](#)

### EXPLORE AUGSBURG

[A to Z Directory](#)

[Academic Offerings](#)

[Admissions](#) >>

[Campus Life](#) >>

[Quick Links](#) >>

[Visiting Augsburg](#) >>

[Augsburg College](#)

## WELCOME BACK AUGGIE ATHLETES



#### Summer 2013 Augsburg Now

[AUGUST 19] - Check out the new edition of Augsburg College's alumni magazine. [More >](#)



#### Auggie Days and move in

[AUGUST 19] - Auggie Days, a required on-campus orientation experience for incoming first-year students, begins August 31. [More >](#)



#### Visit Augsburg at the State Fair

[AUGUST 19] - Augsburg will have a booth in the Education Building at the Minnesota State Fair. [More >](#)



#### Daily A-mail

Updated: August 21, 2013



#### Augsburg Weekly

Updated: August 19, 2013  
Next Edition: September 2



#### State of the College

College Reports (You must be logged into Augnet to view) or submit a question/comment without logging in

### CALENDAR

« August 2013 »

S	M	T	W	T	F	S
				1	2	3
4	5	6	7	8	9	10
11	12	13	14	15	16	17
18	19	20	21	22	23	24
25	26	27	28	29	30	31

WEDNESDAY, AUGUST 21

No Public Events



**Augsburg College**  
[@AugsburgCollege](#)

[Follow](#)

# AugNet Services – logged in

AUGSBURG  
COLLEGE

## INSIDE AUGSBURG



Search... Go

### NEWS AND EVENTS

[Inside Augsburg Home](#)

[News Resources](#) >>

### AUGNET SERVICES

[WebMail](#)

[Records & Registration](#)

[Directory Search](#)

[My Courses \(moodle\)](#)

[Account Utilities](#) >>

[Administrative Tasks](#) >>

[Community](#) >>

[Daily A-mail](#)

[Submit News and  
Announcements](#)

[Submit Calendar Item](#)

[Moodle Community](#)

[Parking Services](#)

[Emergency Notification](#)

[College Reports](#)

[Discussion Forums](#)

[Logout](#)

## WELCOME BACK AUGGIE ATHLETES



#### Summer 2013 *Augsburg Now*

[AUGUST 19] - Check out the new edition of Augsburg College's alumni magazine. [More >](#)



#### Auggie Days and move in

[AUGUST 19] - Auggie Days, a required on-campus orientation experience for incoming first-year students, begins August 31. [More >](#)



#### Visit Augsburg at the State Fair

[AUGUST 19] - Augsburg will have a booth in the Education Building at the Minnesota State Fair. [More >](#)



#### Daily A-mail

Updated: August 21, 2013



#### Augsburg Weekly

Updated: August 19, 2013  
Next Edition: September 2



#### State of the College

College Reports (You must be logged into Augnet to view) or submit a question/comment without logging in

### CALENDAR

« August 2013 »

S	M	T	W	T	F	S
				1	2	3
4	5	6	7	8	9	10
11	12	13	14	15	16	17
18	19	20	21	22	23	24
25	26	27	28	29	30	31

WEDNESDAY, AUGUST 21

#### Financial Petition Committee

meeting  
9:00am to 10:15am, Sverdrup  
102, Sverdrup Hall

- Internal Event



# AugNet Services

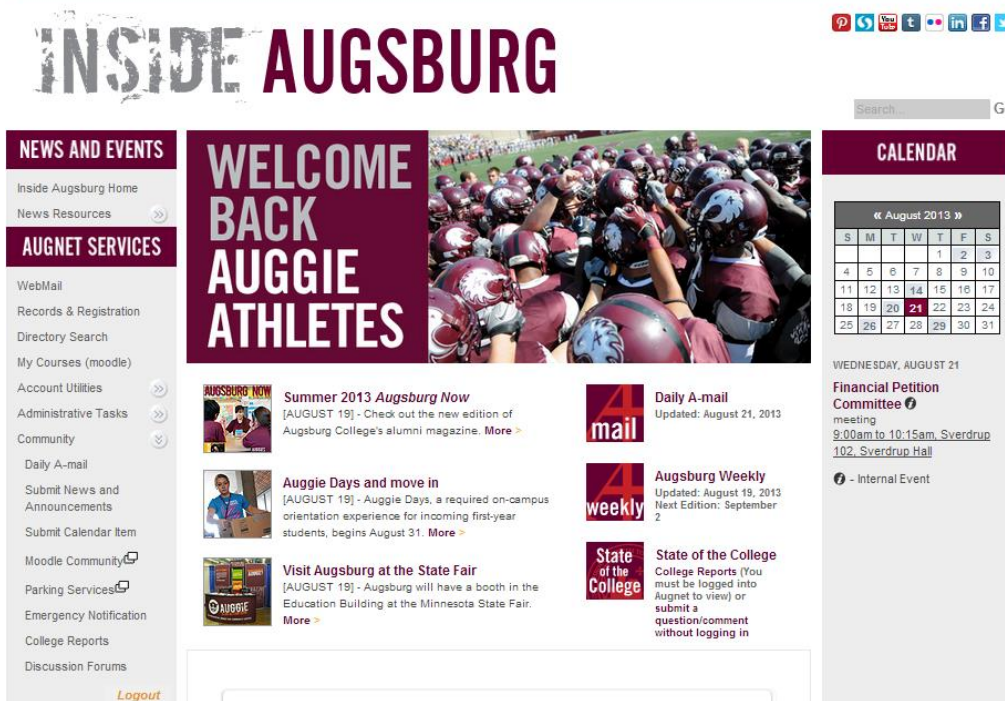
 <http://inside.augsburg.edu>

Login to Inside Augsburg for...

- Webmail (e-mail)
- Records & Registration
- Paying Bills
- Directory Search
- My Courses (moodle)

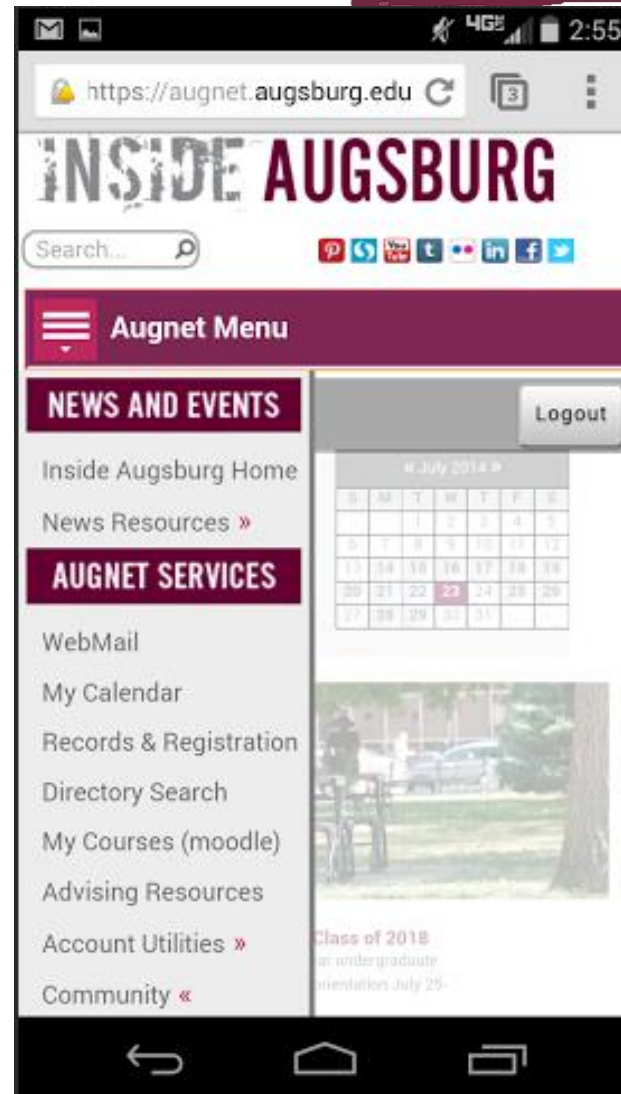
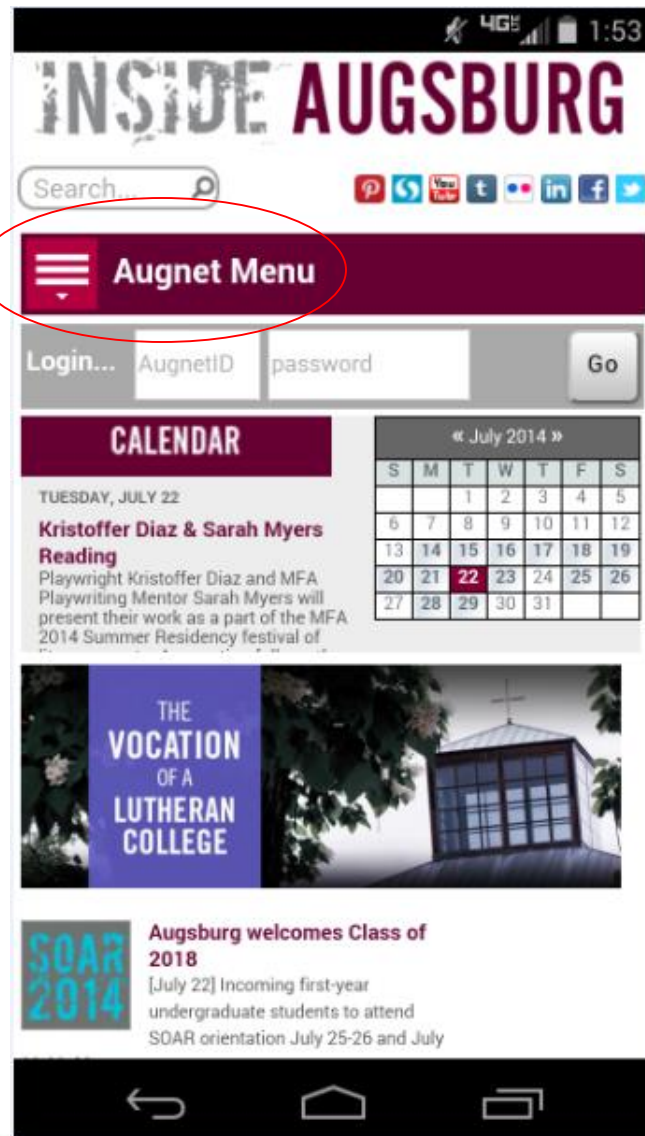
Other AugNet services...

- E-Mail configuration
- Password change



The screenshot shows the 'INSIDE AUGSBURG' website. At the top, there's a search bar and social media links. The main header features a large image of football players and the text 'WELCOME BACK AUGGIE ATHLETES'. Below this, there are several news items: 'Summer 2013 Augsburg Now', 'Auggie Days and move in', and 'Visit Augsburg at the State Fair'. On the right side, there's a 'CALENDAR' section for August 2013, showing a meeting for the Financial Petition Committee on August 21st. A sidebar on the left lists 'AUGNET SERVICES' including WebMail, Records & Registration, Directory Search, My Courses (moodle), Account Utilities, Administrative Tasks, Community, Daily A-mail, Submit News and Announcements, Submit Calendar Item, Moodle Community, Parking Services, Emergency Notification, College Reports, and Discussion Forums. A 'Logout' button is at the bottom of the sidebar.

## AugNet Services – Mobile View



## E-mail: things to know

- “Official means of communication”
- Daily A-Mail
- You are responsible for all information sent to your Augsburg account
- Use Webmail OR...
- An e-mail program on your own computer
  - Go to [inside.augsburg.edu/techdesk](http://inside.augsburg.edu/techdesk) and search “Setting Up Email” for more details



# Forgotten Password Utility

AUGSBURG  
COLLEGE

INSIDE AUGSBURG

AUGNET SERVICES

## AUGNET SERVICES

Student, faculty, and staff  
login for secure services.

Username

Password

[forgot password?](#)

login

## AugNet Password Change

This password controls access to to all of the AugNet related services including e-mail and network logins, in addition to all web logins that require an AugNet username and password.

Changes made to your password here will take effect immediately. As a side effect of the change, you will be logged out of your current AugNet web session and then automatically logged in again with your new password. **Please close any other AugNet related web browser windows before submitting the change.**

Current AugNet password

New AugNet password

Confirm new AugNet password

Change Password

Clear All

Passwords must:

- Be a minimum of 6 characters (max 16)
- Not contain the same character more than 3 times
- Contain at least one numeral
- Be changed each 365 days (180 days for some administrative users)

The following cannot be used:

- Any old password
- Your first or last name
- Your username

Please also note:

- Passwords are case sensitive
- Use of both upper and lower case letters is encouraged (and required for some administrative users)



# Records & Registration

AUGSBURG  
COLLEGE

INSIDE AUGSBURG

AUGNET SERVICES

## Records & Registration

[Logged in as ██████████]

Welcome
Course Search/ Register
Student Info/Contacts
Active Courses
Transcript (Grades)
Degree Progress
Enrollment Verification/
Transcript Ordering
Make a Payment/ Account Activity
Statement History

Welcome ██████████

Students: Need to register for a course? Check grades on a transcript? Make a payment to your student account? You're at the right place. For specific questions regarding registration please contact the Registrar's office at 612-330-1036. For specific questions regarding your finances please contact the Office of Student Financial Services at 612-330-1046 or email us at [enroll@augsborg.edu](mailto:enroll@augsborg.edu).

You have no alert messages.

? Important "Alert" notices specifically for you will sometimes be presented here. Most alerts need to be resolved before you will be allowed to register for new courses, so please try to resolve them quickly.  
If you have any questions about alerts, please contact the [Enrollment Center](#) for help.

- View class schedules (check latest room locations here!)
- View grades and transcripts
- Request enrollment verification
- View current financial statement
- Make a secure online payment
- Unofficial grades may be posted in moodle, but official grades are only posted on R&R

# Records & Registration: Active Courses

AUGSBURG  
COLLEGE

Welcome

Inside Augsburg Home | AugNet Logout

INSIDE  
AUGSBURG

AUGNET SERVICES

## Records & Registration

Welcome  
Course Search/  
Register  
Student Info/Contacts  
Active Courses  
Transcript (Grades)  
Degree Progress  
Enrollment  
Verification/  
Transcript Ordering  
Make a Payment/  
Account Activity  
Statement History  
Track Your  
Financial Aid  
Student Employment  
Pay Records

### Active Courses

Your current and future registered courses



[Printable Active Course Schedule](#)

? The option to drop, withdraw or change grade option is only shown within the allowed dates for the course. See the Academic Calendars from the [Registrar's Office](#) for details.

Enrollment Option	Course	Title	Start-End Date	Grade Option	Credit Attempt
<b>2011-2012 Fall Semester</b>					
	<a href="#">ART132 (2011SEM1-A)</a>	Photography I	9/7/2011-12/9/2011	Traditional	1.00
	<a href="#">COM247 (2011SEM1-B)</a>	Documentary Video	9/8/2011-12/8/2011	Traditional	1.00
	<a href="#">ENL241 (2011SEM1-A)</a>	Introduction to Cinema Art and Lab	9/8/2011-12/8/2011	Traditional	1.00
	<a href="#">THR233 (2011SEM1-A)</a>	Acting for the Camera	9/13/2011-12/6/2011	Traditional	1.00
<b>2011-2012 Spring Semester</b>					
Drop	<a href="#">ENL371 (2011SEM2-A)</a>	History of Cinema	1/18/2012-4/27/2012	Traditional Change	1.00
Drop	<a href="#">FLM490 (2011SEM2-C)</a>	FLM Keystone--for FLM 495 section C	1/17/2012-4/26/2012	Traditional Change	0.00
Drop	<a href="#">FLM495 (2011SEM2-C)</a>	Advanced Documentary Film	1/17/2012-4/26/2012	Traditional Change	1.00
Drop	<a href="#">REL309 (2011SEM2-A)</a>	Religion at the Movies	1/19/2012-4/26/2012	Traditional Change	1.00

# Records & Registration: Transcript

AUGSBURG  
COLLEGE

Welcome [REDACTED]




Inside Augsburg Home | AugNet Logout

INSIDE  
AUGSBURG

AUGNET SERVICES

## Records & Registration

[Logged in as [REDACTED]]

- Welcome
- Course Search/  
Register
- Student Info/Contacts
- Active Courses
- Transcript (Grades)
- Degree Progress
- Enrollment  
Verification/ 
- Transcript Ordering
- Make a Payment/  
Account Activity 
- Statement History
- Track Your  
Financial Aid 
- Student Employment  
Pay Records

## Transcript Terms

<b>Name</b>	[REDACTED]
<b>ID Number</b>	40007879
<b>Stage</b>	Senior
<b>Date</b>	12/9/2011
<b>Advisor</b>	Ellenwood, Wesley
<b>Placement</b>	Math Placement Level: MPG3 Writing Placement Level: EFFWRT Critical Thinking Level: 39
<b>Achievements</b>	Engaging Minneapolis Requirement Completed

? This is a list of the terms in which you have graded classes. Please choose a term to see the associated transcript records.

All Terms

Term
<a href="#">2008-2009 Fall Semester</a>
<a href="#">2008-2009 Spring Semester</a>
<a href="#">2009-2010 Fall Semester</a>
<a href="#">2009-2010 Spring Semester</a>
<a href="#">2009-2010 Summer Session I</a>
<a href="#">2010-2011 Fall Semester</a>
<a href="#">2010-2011 Spring Semester</a>
<a href="#">2010-2011 Summer Session I</a>
<a href="#">2011-2012 Fall Semester</a>

# Records & Registration: Transcript – Specific term

AUGSBURG  
COLLEGE

Welcome [Redacted]




Inside Augsburg Home | AugNet Logout

INSIDE AUGSBURG

AUGNET SERVICES

## Records & Registration

[Logged in as [Redacted]]

Welcome
Course Search/ Register
Student Info/Contacts
Active Courses
Transcript (Grades)
Degree Progress
Enrollment Verification/ 
Transcript Ordering
Make a Payment/ Account Activity 
Statement History
Track Your Financial Aid 
Student Employment
Pay Records

## Augsburg College Transcript

<b>Name</b>	[Redacted]
<b>ID Number</b>	40007879
<b>Stage</b>	Senior
<b>Date</b>	12/9/2011
<b>Advisor</b>	Ellenwood, Wesley
<b>Placement</b>	Math Placement Level: MPG3 Writing Placement Level: EFFWRT Critical Thinking Level: 39
<b>Achievements</b>	Engaging Minneapolis Requirement Completed

? Recently submitted grades may not be immediately reflected in GPA calculations. You can request an exhaustive and authoritative printed transcript from the [Office of the Registrar](#).

[Printable Version](#)

2010-2011 / Spring Semester

UG DAY

Dept/Course	Title	Grade	Credits
ART340	Digital Imaging	2.5	1.00
FLM312	Film Production II	2.0	1.00
HPE003	Lifetime Activity: Soccer	P	0.00
MUS245	Arts Management and Concert Promotion	3.0	1.00
PHY119	Physics for the Fine Arts	0.0	0.00
PHY119L	Physics for the Fine Arts Lab	N	0.00
		<b>Current</b>	<b>1.875</b>
		<b>Cumulative</b>	<b>1.891</b>
			<b>22.00</b>



# Records & Registration: Transcript – Cumulative

2006-2007 / Transfer Work I

UG DAY

Dept/Course	Title	Grade	Credits
CSIS161	Programming I	GRT	0.00
PHYS117	Basic Astronomy	GRT	0.00
TRNS000TR	Total Granted	GRT	1.50
		Current	0.000
		Cumulative	0.000
			1.50

2007-2008 / Fall Semester

UG DAY

Dept/Course	Title	Grade	Credits
AUG101	Augsburg Freshman Seminar	P	0.00
CSC160	Intro to Computer Science/Communications	3.0	1.00
MAT114	Precalculus	3.0	1.00
PSY105	Principles of Psychology	4.0	1.00
REL100	Christian Vocation & Search/Meaning I	4.0	1.00
		Current	3.500
		Cumulative	3.500
			5.50

2007-2008 / Spring Semester


UG DAY

Dept/Course	Title	Grade	Credits
CSC170	Structured Programming	4.0	1.00
ENL111	Effective Writing	4.0	1.00
MAT145	Calculus I	3.0	1.00
REL200	Christian Vocation & Search/Meaning II	4.0	1.00
		Current	3.750
		Cumulative	3.625
			9.50

# Records & Registration: Financial Statement

AUGSBURG  
COLLEGE

[your account](#) [view bills](#) [make a payment](#) [cart](#) [help](#) [sign out](#)



Student Finances Online

Caren Custer

eRefund

General Refunds: Enrolled [Edit](#)

Guest Usernames




[Add New](#)

You currently have no Guest Usernames set up.

Your Bills

[View All](#)

To view all your bills click 'View All'.

	Augsburg Bill	08/14/2013	<a href="#">View</a> <a href="#">Download</a>
	Augsburg Bill	05/14/2013	<a href="#">View</a> <a href="#">Download</a>
	Augsburg Bill	04/03/2013	<a href="#">View</a> <a href="#">Download</a>

[Click here to view transaction history](#)

Payment Plans

[Enroll in the Fall Semester Payment Plan](#)

[Enroll in the Fall Employer Tuition Reimbursement Plan](#)

Saved Accounts

[Add New](#)

Checking [Edit](#)

1098-T

[Click here to view 1098-T](#)

# Records & Registration: Financial Aid

AUGSBURG  
COLLEGE

Welcome [REDACTED]

[Inside Augsburg Home](#) | [AugNet Logout](#)

You are currently logged in as: [REDACTED] | Current Award Year: 2011/2012

AUGSBURG COLLEGE

## Financial Aid

[Home](#)

[Awards](#)

[Documents](#)

[Messages](#)

[Loans](#)

Welcome [REDACTED]

Welcome to the online financial aid tracking system. Contact the Office of Student Financial Services at (612) 330-1046 or [studentfinances@augsborg.edu](mailto:studentfinances@augsborg.edu) if you have questions or need assistance.

2011/2012

[The College Board](#), PowerFAIDS® Net Partner Version 17.0

# Online directory: search

Welcome auggie@augsborg.edu

Inside Augsburg Home | AugNet Logout

INSIDE AUGSBURG

AUGNET SERVICES

## Directory Search

First Name:   
 Department:   
 Location:   
 Phone:

Last Name:   
 Username:   
 Job Title:   
 Campus Box:

Specify the search criteria in the categories and click search to display the result. The more criteria you specify, the more accurate the result.

**Search**

**Reset**

Exact Match:

☐ Yes ☒ No

### Predefined Searches

- Department Listing
- Faculty/Staff



# Online directory: results

Go to [inside.augsburg.edu/techdesk](http://inside.augsburg.edu/techdesk) and search "hide directory"

- Restricted to Augsburg students, staff, and faculty
- ID card photos!
- Can choose to hide your information

INSIDE AUGSBURG

AUGNET SERVICES

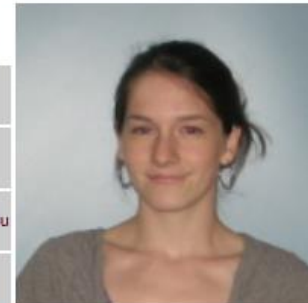
Search Results

[Print this search](#)

[Customize and print this search](#)

Estelle Grace RichardsonHohn


Title:	Day Student
Department:	Students
E-Mail:	richar20@augsb.org.edu
Box:	1426



[Print this search](#)

[Customize and print this search](#)

This directory is provided for internal Augsburg College use only.  
Unauthorized use or distribution of this information is prohibited.

New Search 

# My Courses (moodle)

- Every course has a moodle site
- Use of moodle will vary – check with your instructor for expectations
- Announcements
- Forums
- Readings
- Much more

Moodle 2012-2013 COURSES 2012-2013 COMMUNITY ALL YEARS TECHDESK

AUGSBURG COLLEGE COURSES 2012-13 COURSES

You are logged in as ima Auggie (Logout)

COURSE EVALUATIONS

WELCOME TO MOODLE 2012-2013

Where are all of my old courses?  
All moodle sites, from Fall 2005 to next year can be found on this page.

## My courses

If you do not see your course listed below your instructor may not have made the moodle course available to students yet.

Remember that your **official** class lists and locations can be found in Records and Registration on Inside Augsburg.

### Fall Semester 2012

● Introduction to American Indian Studies (AIS105_2012SEM1-A)	-
Instructor: Elise Marubio	
<a href="#">schedule information</a>	
● Introductory Biology (BIO151_2012SEM1-A)	-
Instructor: Jennifer Bankers-Fubright	
<a href="#">schedule information</a>	
● Introductory Biology (BIO151_2012SEM1-B)	-
Instructor: Kirsten Walt	
<a href="#">schedule information</a>	
● Introductory Biology (BIO151_2012SEM1-C)	-

SETTINGS

My profile settings

NAVIGATION

Home

- My home
- Site pages
- My profile
- My courses

HELP!

Students

Students can contact the TechDesk via phone (612-330-1400), email (techdesk@augsborg.edu) or online chat to get help. The TechDesk website also has many tutorials on

## Other AugNet services

Data Storage

Computer labs & classrooms

Wired & wireless access

Printing

# Computers: Data storage

- Online storage (Google drive, Dropbox, etc)
- Augsburg Google drive 30GB
- AugNet folders
- USB thumb drives



**DON'T SAVE ON DESKTOP ON LAB MACHINES!!**





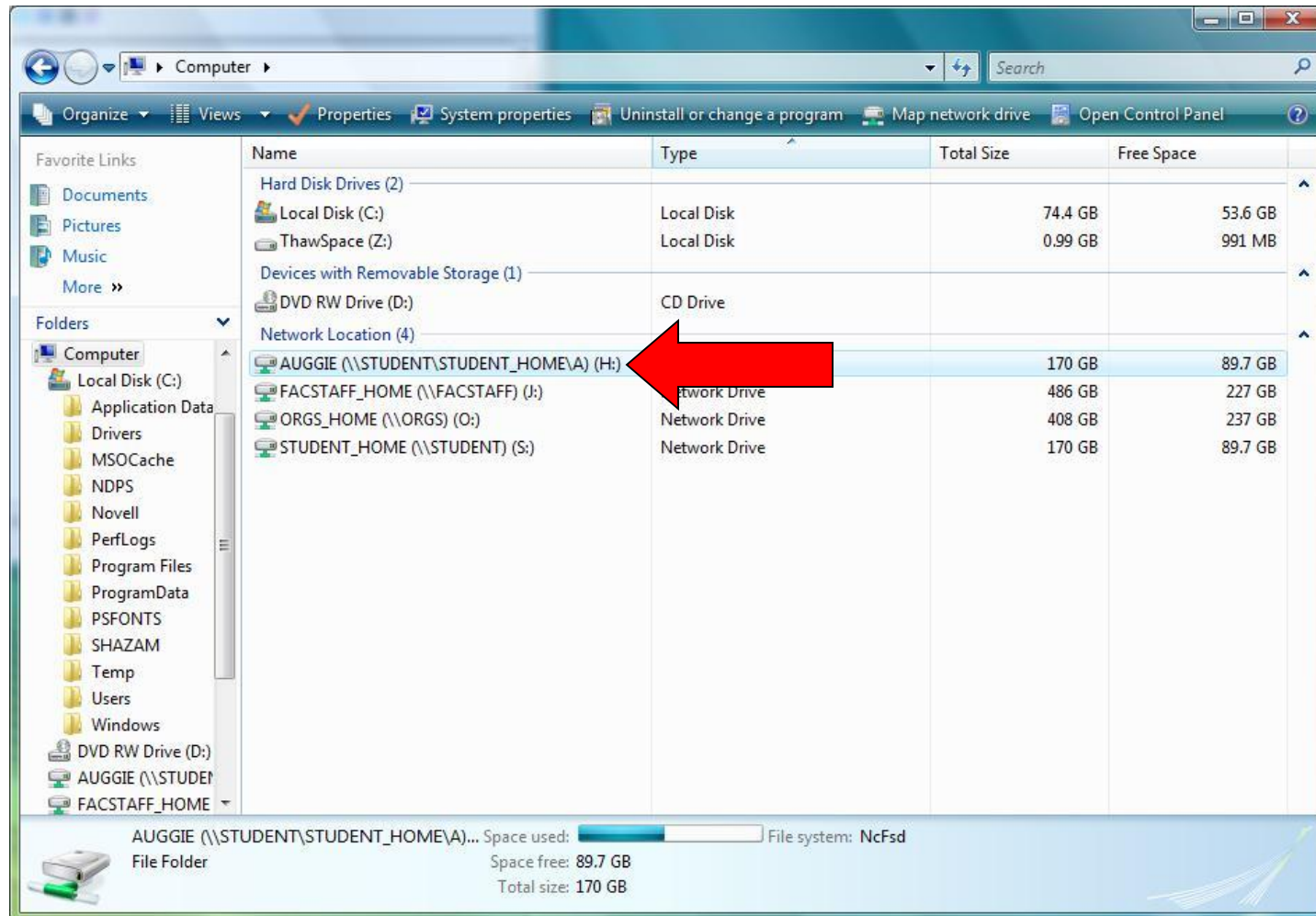
## AugNet folders

- 1 GB of storage
  - private space just for you
  - ‘public’ folder for sharing files
  - ‘www’ folder for creating a web site
- Access from anywhere in the world
- Lab computers connect automatically
- From your own computer:
  - You can login to your network folders though the Inside Augsburg site.

# Network Folders – From on campus



# Network Folders – From on campus



# Network Folders – From on campus

File Edit View Tools Help				
Organize ▾ Burn New folder				
	Name	Date modified	Type	Size
★ Favorites	Computer			
	Desktop			
	Downloads			
	Recent Places			
Libraries				
Computer	Local Disk (C:)			
	SANTAND (\\FACST			
	Home Work	11/16/2010 7:48 AM	File folder	
	public	3/31/2009 3:50 PM	File folder	
	www	3/31/2009 3:50 PM	File folder	
	~WRA0004.wbk	4/23/2012 11:16 AM	Microsoft Word B...	32 KB
	Kayako Session August26.docx	8/26/2011 2:36 PM	Microsoft Word D...	25 KB
	Latrice.docx	1/11/2013 2:23 PM	Microsoft Word D...	16 KB
	Library Snapshot version 2.docx	8/24/2011 1:22 PM	Microsoft Word D...	165 KB
	Library Snapshot.docx	8/24/2011 12:37 PM	Microsoft Word D...	193 KB
	Moodle_Huddle_Leveraging_Peer_Assess...	10/10/2012 4:26 PM	Microsoft PowerP...	2,102 KB
	Paideia_2012.csv	9/20/2012 11:37 AM	Microsoft Excel C...	2 KB
	pptE216.tmp	5/29/2012 9:52 AM	TMP File	3,656 KB
	sukhpreet.docx	8/26/2011 6:28 PM	Microsoft Word D...	13 KB
INFORMATION TEC				
FACSTAFF_HOME (\\				
COURSES_HOME (\\				
ORGS_HOME (\\OR				
STUDENT_HOME (\\				
Network				



# Network Folders – NetStorage

 Search “network folder” for instructions

**AUGSBURG COLLEGE** AUGNET FOLDERS About NetStorage **Novell**

User: .auggie.A.Students.Augsburg

**Location: /NetStorage**

File | Edit | View | Help Filter: \*

Name	Size	Modified
DriveJ@FACSTAFF_HOME		08/28/2009 9:40 AM
DriveK@COURSES_HOME		08/28/2009 9:40 AM
DriveO@ORGS_HOME	0	08/28/2009 9:40 AM
DriveS@STUDENT_HOME	0	08/28/2009 9:40 AM
Home@AUGSBURG	0	10/07/2008 2:11 PM

Done

# Computers: On-campus resources

Students use the **250+**  
campus computers...

- Lindell Link Lab
- 24-hour Urness Lab
- Christensen Center
- Library laptop fleet
- Computer classrooms
- Web kiosks
- Program labs & offices



# Computers:

## Using a business owned laptop

Often you will need administrative rights to:

- Add printers
- Connect to wireless
- Access network folders

Connect with your business's system administrator to work that out.

# Printers: College-provided

- Multi-purpose copier/printer provided in...
  - each residence hall lobby
  - computer classrooms & suites
  - throughout Lindell Library
- Color laser printers in...
  - Street level of library
  - Graphics arts computer lab
- Duplex (2-sided) printing
- Maintained by Central Services
- Toner & paper provided
- Print quota in effect (500 pages/6months)
- Go to [inside.augsburg.edu/techdesk](http://inside.augsburg.edu/techdesk) and search “Printers”



# Wireless access:

AUGSBURG  
COLLEGE

## Augsburg wireless network:

- Available campus-wide
- Secure authentication
- Gaming consoles/web devices connect automatically
- Augsburg Guest Augsburg
- Search for “wireless” on the TechDesk site.





# Wireless access: SafeConnect

AUGSBURG  
COLLEGE



## An Important Message From Augsburg College

We have moved from Clean Access to a new program called SafeConnect. We require you to authenticate and install SafeConnect before proceeding.

[Click Here To Read Our Acceptable Use Policy](#)

Augnet Username:

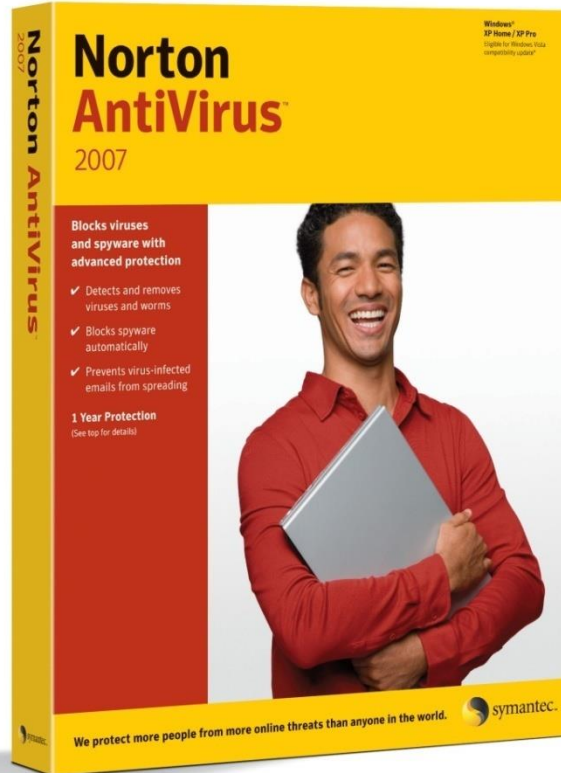
Password:

Please enter valid credentials

If you have questions please contact the TechDesk at  
612-330-1400. For online support use our Live Chat.



# Your computer: Taking Care of Viruses



Student-owned computers running Windows **MUST** have an antivirus application installed and up-to-date

Free anti-virus programs can be found online (e.g. Microsoft Security Essentials, Avast)

# Your computer: Taking care of Spyware

We recommend installing and  
using at least of the following  
products:

- Malwarebytes
- Comodo
- Windows Defender
- Avast



# Your computer: Software Recommendations



Microsoft Office 2013 for PC  
Microsoft Office 2011 for Mac

Read & Write Gold for PC/Mac



**Free for Augsburg students**

- 🖥 Search [inside.augsburg.edu/techdesk](http://inside.augsburg.edu/techdesk) for "msoffice" and "rwgold" for details

# Your computer: Discounts

Partnerships with...

- Apple
- Dell
- CDWG



## Check out MS' Ultimate Steal Deal



Search for “discounts” for details



# Getting help!

- The TechDesk
  - 612.330.1400
  - [techdesk@augsborg.edu](mailto:techdesk@augsborg.edu)
  - [inside.augsburg.edu/techdesk](http://inside.augsburg.edu/techdesk)
  - Street Level, Lindell Library room 104

# What does the TechDesk do?

- AugNet accounts
- Internet connections on campus (wired and wireless)
- Campus printer help (quota)
- Diagnose virus and spyware issues
- General computer questions
- No hardware maintenance or repair work



Not listed here? Ask us anyway!

# Hours & Location

Street Level, Lindell Library



## Spring/Fall Hours

M-F: 7:30am-7:00pm

Sa: 7:30am – 4pm

Su: 5pm – 8pm

Visit the TechDesk website for a complete listing of hours, including dates that we are closed.

# Find help online:

# [inside.augsburg.edu/techdesk](http://inside.augsburg.edu/techdesk)

AUGSBURG  
COLLEGE

## STUDENT COMPUTING

[Home](#)[AugNet Services](#)[Technology Policies](#)[Account Activation](#)[Contact Us](#)

### Tech Desk

Student Technology and the TechDesk are a part of the Information Technology Department.

The TechDesk is a central point of contact for student technology information. We are here to support and encourage Augsburg students in their use of technology, in their academic work and beyond.



Search for answers in our  
knowledgebase

### Frequently Requested Info

[Activate my Account](#) — for new and re-admitted students

[Wireless Help](#) — connect to the campus-wide wireless network

[Printer Help](#) — print from your computer to a campus printer

[Remote Lab](#) — access to software installed on our labs from your own computer

[Atomic Learning](#) — access to thousands of short clips about Word and other applications