

AUGSBURG COLLEGE

2014-2015
Report on Faculty Teaching
by Tenure Status

Office of Academic Affairs
Campus Box 136
612-330-1024

Prepared by Nathan Hallanger, Senior Analyst
March 2015

At its May 2, 2013, meeting, the faculty approved a motion brought forward from the Personnel Policies Committee related to non-tenure-track faculty appointments. The motion included a request related to ongoing attention to the proportion of courses taught by faculty in non-tenure-track appointments. The relevant portion of the faculty motion stated:

With regard to proportions we reiterate the current expectation that “Within the limits of its resources, the College limits the number of Non-tenure Track appointments in order that a maximum of 30% of the total of FTE for teaching duties are assigned to Non-tenure Track faculty members” (FH §6.1.1). In order to ensure focus on moving toward that limit, we request that the Dean’s Office provide the Faculty Senate by September 15, 2013 and thereafter by February 1 of each year information on proportionality including head count and teaching FTE of faculty in part-time, full-time non-tenure track, and tenure-track appointments, both of the Faculty as a whole and broken down by Departments/Programs or in other ways that the Faculty Senate might request.

This report is issued to Faculty Senate in response to the motion noted above.

The data included in this report includes information from the 2014-2015 academic year. It includes course and faculty information from the fall and spring semesters. The proportion of teaching by tenure status was developed using information in the course schedules in the student information system and the faculty load information included there, along with tenure status information from academic affairs and human resources. The teaching data (Table 1) includes undergraduate and graduate departments based on course listings. The headcount data (Table 2) includes faculty headcounts by home department.

CHART 1: 2012-13, 2013-14, and 2014-15 Overall Teaching Proportions

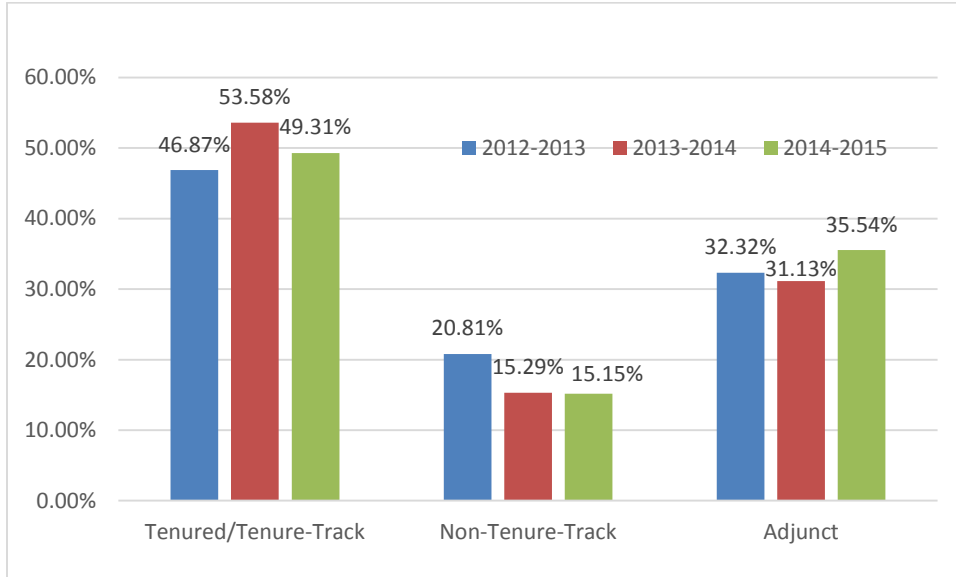


CHART 2: Teaching Proportions by Course Type

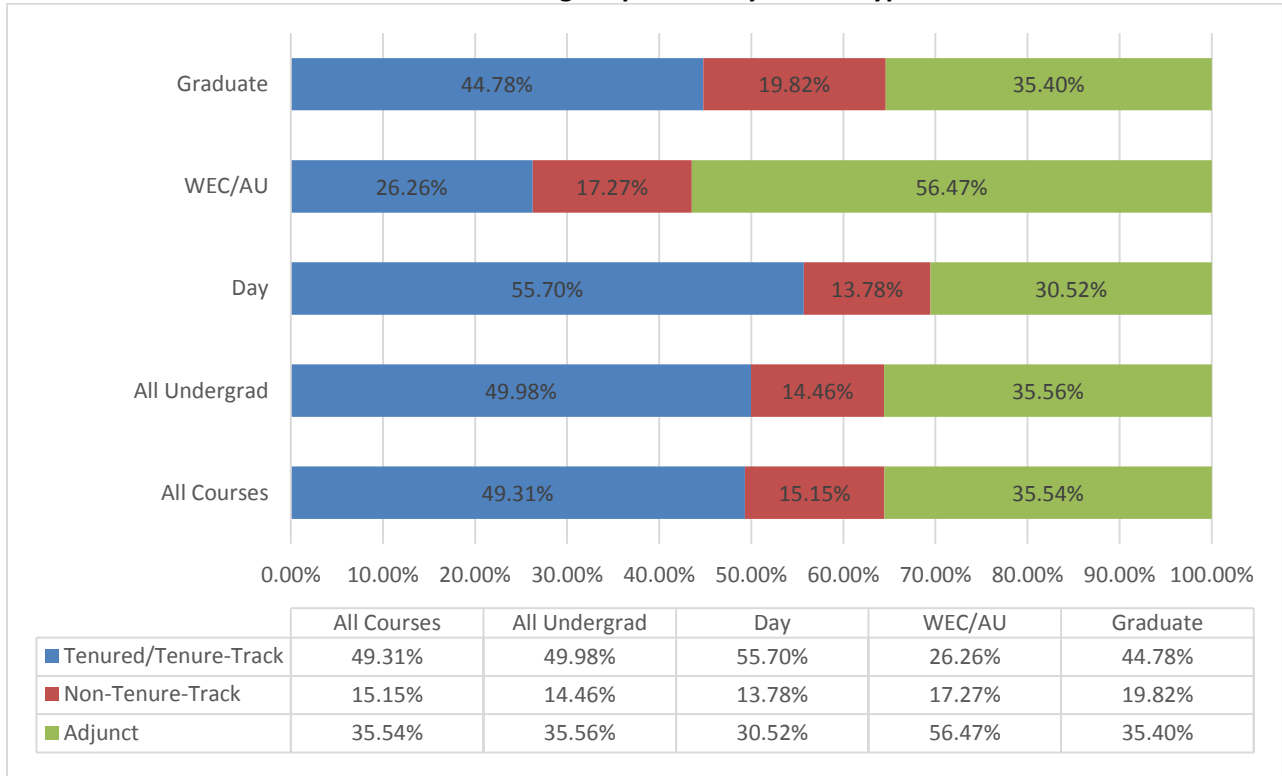


TABLE 1: 2014-2015 Teaching Proportions by Department and Appointment Type for All Courses			
Department	Tenured/Tenure-Track	Non-Tenure-Track	Adjunct
American Indian Studies	75%	0%	25%
Art	41%	12%	47%
Biology	63%	8%	29%
Business Administration	38%	16%	46%
Chemistry	59%	6%	35%
Communication Studies	61%	13%	26%
Computer Science	54%	27%	19%
Doctor of Nursing Practice	56%	33%	11%
Economics	65%	3%	32%
Education	33%	21%	46%
English	61%	7%	32%
Environmental Studies	100%	0%	0%
Film	10%	90%	0%
Health, Physical Education, and Exercise Science	19%	44%	37%
History	93%	0%	7%
Honors	81%	0%	19%
Languages and Cross Cultural Studies	20%	15%	65%
Master of Arts in Education	38%	10%	52%
Master of Arts in Leadership	45%	0%	55%
Master of Arts in Nursing	53%	47%	0%
Master of Business Administration	32%	39%	29%
Master of Fine Arts	34%	10%	56%
Master of Music Therapy	100%	0%	0%
Master of Physician Assistant Studies	69%	31%	0%
Master of Social Work	45%	8%	48%
Mathematics	65%	12%	23%
Music	36%	39%	24%
Nursing	14%	50%	36%
Philosophy	76%	0%	24%
Physics	73%	0%	27%
Political Science	92%	0%	8%
Psychology	70%	0%	30%
Religion	42%	0%	58%
Social Work	79%	0%	21%
Sociology	92%	0%	8%
Theater	22%	0%	78%
Women's Studies	14%	71%	14%
All Departments	49%	15%	36%

TABLE 3: 2014-2015 Headcount by Department and Appointment Type

Department	Tenured/Tenure Track	Non-Tenure Track	Adjunct
American Indian Studies	2		3
Art Department	4	1	13
Biology	7	1	7
Masters of Business Administration	1	1	6
Business Administration	10	5	31
Chemistry	5	1	6
Communications	4	2	4
Computer Science	3	1	2
Economics	4		5
Masters of Education			3
Education	11	7	36
Master of Fine Arts			6
English	9	1	14
History	5		2
Masters in Leadership	1	1	5
Masters in Physician Assistant Studies	4	5	
Mathematics	6	2	7
Languages and Cross-Cultural Studies	4	1	13
Music	6	5	9
Master of Arts in Nursing		1	
Nursing	5	9	11
Philosophy	2		2
Physical Education	1	3	2
Physics	4		5
Political Science	4		2
Psychology	8		7
Religion	10		16
Masters in Social Work	3	1	13
Social Work	9	1	17
Sociology	5		2
Theatre Arts	4		10
Women's Studies		1	1
Grand Total	138	48	233

DIVISIONAL PROPORTIONS

Below are the divisional breakouts of the percentages of courses by department from the 2014-2015 academic year. It includes only the fall and spring semesters.

Fine Arts and Humanities

Department	Tenured/Tenure Track	Non-Tenure Track	Adjunct
American Indian Studies	75%	0%	25%
Art	41%	12%	47%
Communication Studies	61%	13%	26%
English	61%	7%	32%
Film	10%	90%	0%
History	93%	0%	7%
Languages and Cross Cultural Studies	20%	15%	65%
Music	36%	39%	24%
Philosophy	76%	0%	24%
Religion	42%	0%	58%
Theater	22%	0%	78%
Women's Studies	14%	71%	14%
FAH Total	46%	15%	39%

Natural and Social Sciences

Department	Tenured/Tenure Track	Non-Tenure Track	Adjunct
Biology	63%	8%	29%
Chemistry	59%	6%	35%
Computer Science	54%	27%	19%
Economics	65%	3%	32%
Mathematics	65%	12%	23%
Physics	73%	0%	27%
Political Science	92%	0%	8%
Psychology	70%	0%	30%
Sociology	92%	0%	8%
NSS Total	69%	6%	25%

Professional Studies

Department	Tenured/Tenure Track	Non-Tenure Track	Adjunct
Business Administration	38%	16%	46%
Education	33%	21%	46%
Health, Physical Education, and Exercise Science	19%	44%	37%
Nursing	14%	50%	36%
Social Work	79%	0%	21%
PS Total	35%	23%	42%

GRADUATE PROGRAMS

Graduate Programs

Department	Tenured/Tenure-Track	Non-Tenure Track	Adjunct
Doctor of Nursing Practice	56%	33%	11%
Master of Arts in Education	38%	10%	52%
Master of Arts in Leadership	45%	0%	55%
Master of Arts in Nursing	53%	47%	0%
MBA	32%	39%	29%
MFA	34%	10%	56%
MMT	100%	0%	0%
MSW	45%	8%	48%
Physician Asst.	69%	31%	0%
Graduate Programs Total	48%	17%	34%

ADULT UNDERGRADUATE COURSES

Overall Adult Undergraduate

Department	Tenured/Tenure Track	Non-Tenure Track	Adjunct
Art	67%	0%	33%
Business Administration	12%	17%	71%
Communication Studies	60%	10%	30%
Computer Science	100%	0%	0%
Economics	60%	0%	40%
Education	26%	15%	59%
English	0%	0%	100%
History	50%	0%	50%
Health, Physical Education, and Exercise Science	0%	100%	0%
Languages and Cross Cultural Studies	0%	0%	100%
Mathematics	0%	0%	100%
Music	25%	0%	75%
Nursing	14%	50%	36%
Philosophy	0%	0%	100%
Physics	69%	0%	31%
Political Science	100%	0%	0%
Psychology	70%	0%	30%
Religion	11%	0%	89%
Theater	0%	0%	100%
Adult Undergraduate Total	26%	17%	56%

Adult Undergraduate: Minneapolis

Department	Tenured/Tenure Track	Non-Tenure Track	Adjunct
Art	67%	0%	33%
Business Administration	14%	16%	70%
Communication Studies	75%	13%	13%
Computer Science	100%	0%	0%
Economics	60%	0%	40%
Education	34%	17%	49%
English	0%	0%	100%
History	100%	0%	0%
Health, Physical Education, and Exercise Science	0%	100%	0%
Mathematics	0%	0%	100%
Music	25%	0%	75%
Nursing	32%	46%	21%

Adult Undergraduate: Minneapolis (continued)

Department	Tenured/Tenure Track	Non-Tenure Track	Adjunct
Philosophy	0%	0%	100%
Physics	69%	0%	31%
Political Science	100%	0%	0%
Psychology	70%	0%	30%
Religion	0%	0%	100%
Theater	0%	0%	100%
Minneapolis Total	34%	16%	50%

Adult Undergraduate: Rochester

Department	Tenured/Tenure Track	Non-Tenure Track	Adjunct
Business Administration	0%	25%	75%
Communication Studies	0%	0%	100%
Education	0%	7%	93%
History	0%	0%	100%
Mathematics	0%	0%	100%
Languages and Cross Cultural Studies	0%	0%	100%
Nursing	0%	53%	47%
Political Science	100%	0%	0%
Religion	20%	0%	80%
Theater	0%	0%	100%
Rochester Total	5%	21%	74%