

# WIRELESS ROUTER SETUP FOR AUGSBURG RESHALLS BELKIN ROUTERS

These instructions were written using the Belkin Wireless G Router, model F5D7230-4. The process should be very similar for comparable models of Belkin Wireless Routers.

This process will work on any computer (Windows, Mac, or Linux).

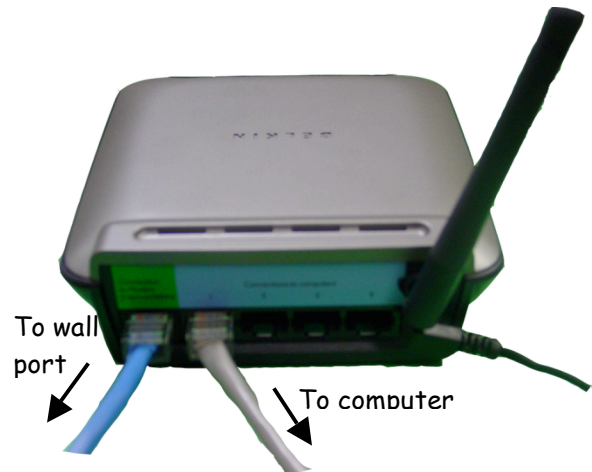
## Before beginning:

- Connect your computer to the internet using the wall port provided in your room. *You must have a functioning connection (including Clean Access) before you can set up your router.*
- If you have trouble with this setup and have previously used your router somewhere else, reset your router to factory default settings and start over at the beginning of these instructions. To reset your router, connect the power cord to the router and use a bent paperclip or other tool to press the reset button on your router. The reset button is inside a slit on the front bottom of your router (see image at right). Hold the reset button for 10 seconds, then release it. The router lights will blink while it resets.

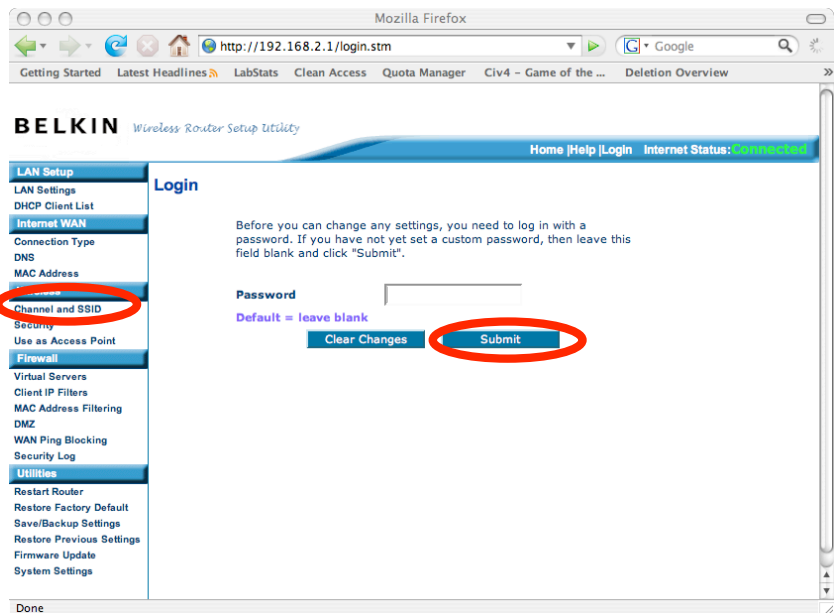


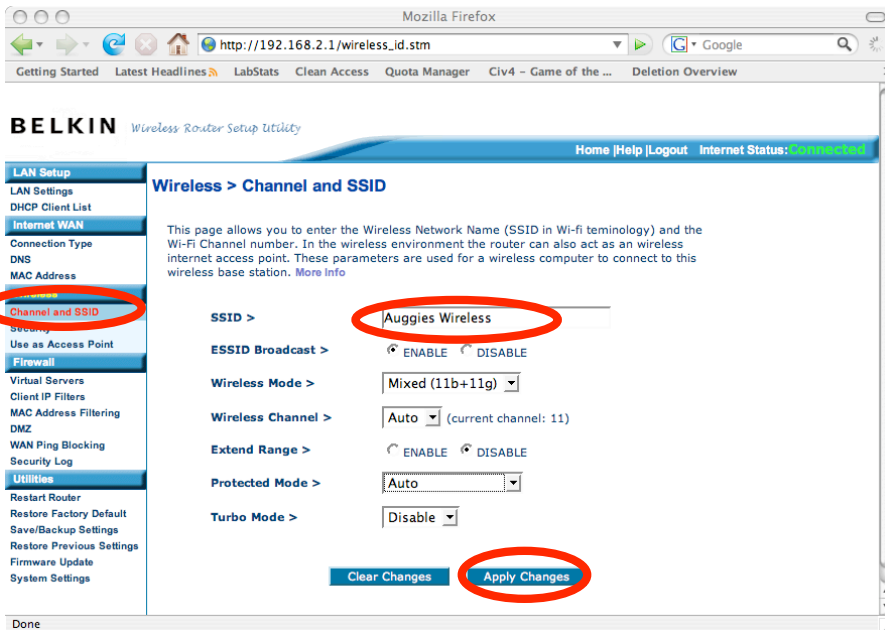
## To set up your router:

1. Physically connect your router for configuration, as pictured here.
  - a. Unplug the Ethernet cable that connects your computer to the wall port.
  - b. Connect one end of that cable to your computer, and plug the other end into the port numbered "1" on the back of your router.
  - c. Locate another Ethernet cable (one is provided in the box with your router). Plug one end of this second cable into your wall port, and connect the other end to the green port labeled "Connection to Modem" on the back of your router.
  - d. Plug in the router's power adaptor into a power socket, and connect the other end to the router



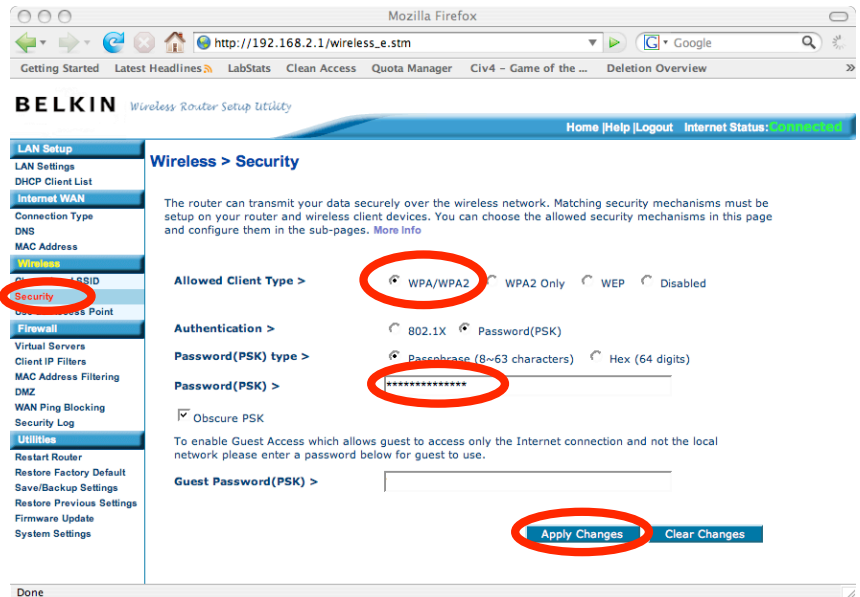
2. On your computer, open Internet Explorer or another Web browser. In the address bar, type "192.168.2.1" and press Enter. The status page will load.
3. Click on "Channel and SSID" in the left-hand sidebar. The system will ask you to log in. Leave the password box empty and click [Submit].



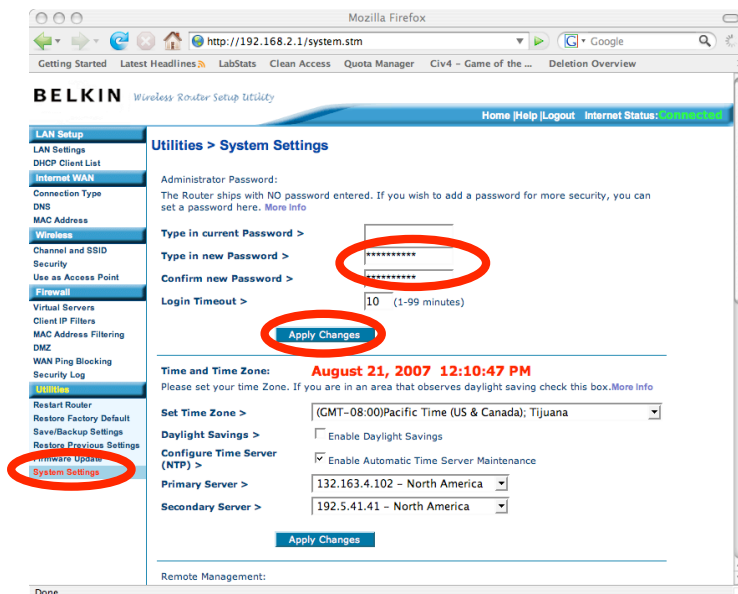


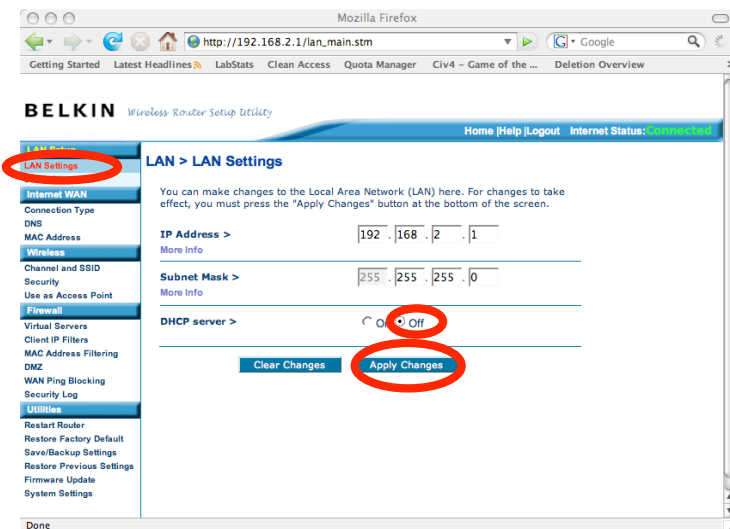
4. Click on “Channel and SSID” again to load the correct page.
5. Find the box labeled “SSID”. Choose a name for your network – this name is the one you will select when you are connecting your computer to your wireless network. Type that name in the box.
6. Click the [Apply Settings] button. The router will save settings. When it is finished, it will take you back to the “Channel and SSID” page.

7. Click “Security” under “Wireless” in the left-hand sidebar.
8. Next to “Allowed Client Type”, choose “WPA/WPA2”. Additional options will appear.
9. Choose a password that you’ll use to connect to your network. Type that password in the box labeled “Password (PSK)”. Leave the box labeled “Guest Password (PSK)” empty.
10. Then click [Apply Changes] to save your changes. When finished, the router will return you to the same screen.



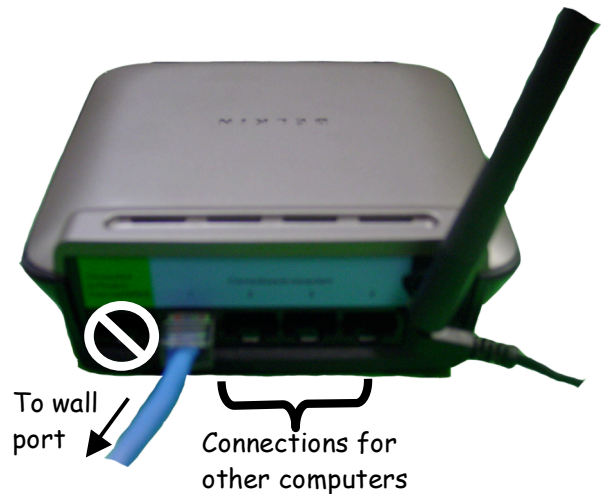
11. Click “System Settings” in the left-hand sidebar.
12. Choose a new password that will be used to make changes to your router’s setup. Enter it in the “Type in new password” and “Confirm new password” boxes. Leave the “Type in current password” box empty.
13. Click on [Apply Changes]. When finished, the router will return you to the same screen.





14. Click on “LAN Settings” in the left-hand sidebar.
15. About halfway down the page, look for the setting labeled “DHCP Server”. Select the radio button next to “Off” for this option. Other options will disappear.
16. Click [Apply Changes] at the bottom of the page. When finished, the router will return you to the same page.

17. Finalize the physical connections to your router for normal use, as shown here.
  - a. Disconnect both ends of the network cable that connects your computer to the router.
  - b. Move the cable from the green “Connection to Modem” port on your router to the blue port numbered “1”. You will not use the green port in the future.



**Finished:** You can now connect your computer wirelessly to your wireless network. You will need the password you chose in step 9. If you want to share your wireless connection with your friends, they’ll need to know your network’s name, and the password.